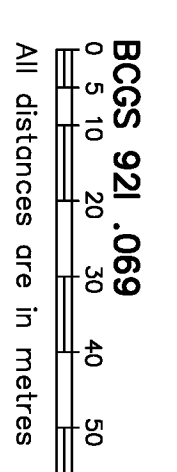
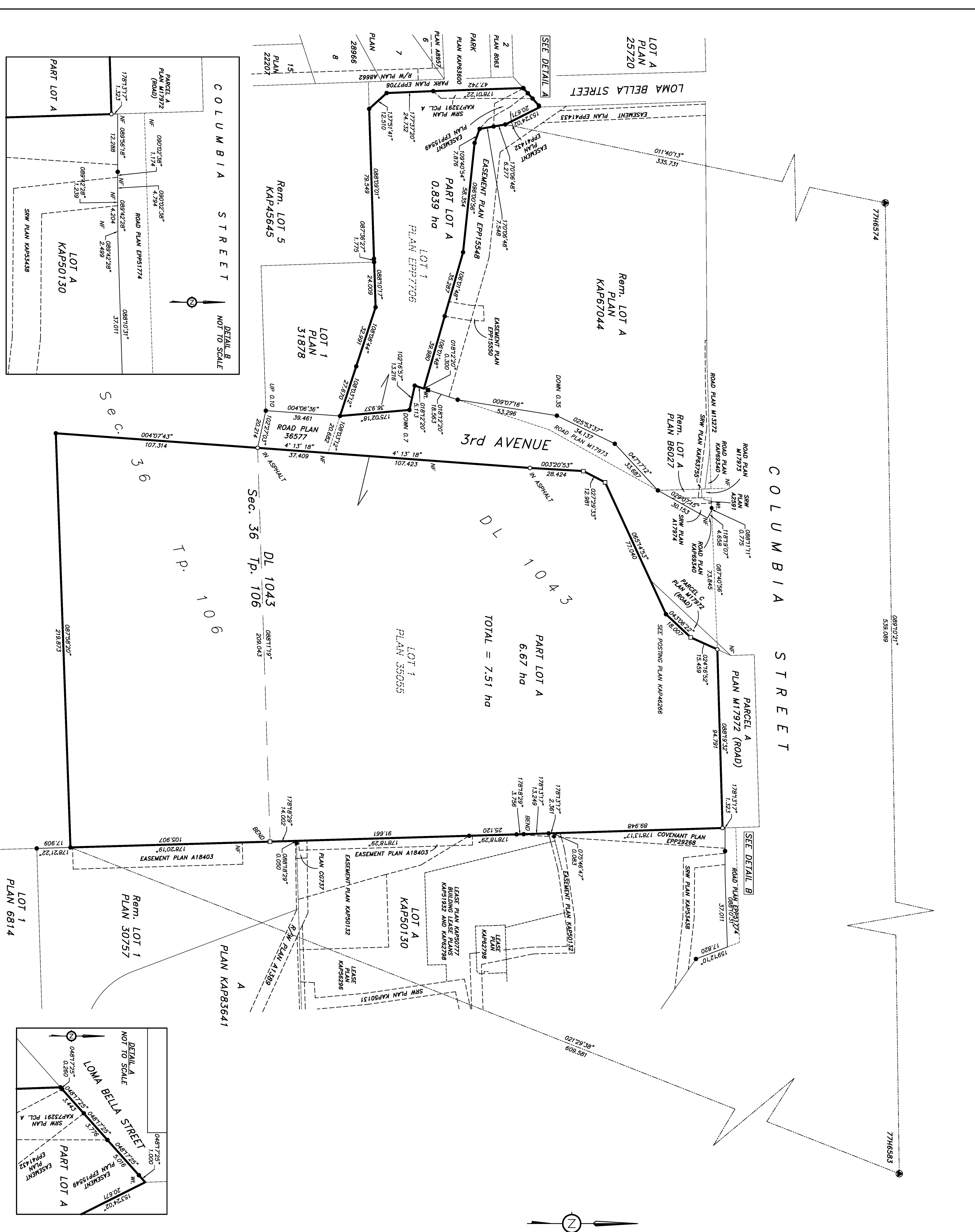


PLAN EPP67379



REFERENCE PLAN OF LOT 1, DL 1043 AND OF Sec. 36, Tp. 106, KDYD, PLAN 35055 AND LOT 1, Sec. 36, Tp. 106, KDYD, PLAN EPP7706 PURSUANT TO SECTION 99(1)(i) OF THE LAND TITLE ACT

BCCS 921.089

THE INTENDED PLOT SIZE OF THIS PLAN IS 864mm IN WIDTH BY 580mm IN HEIGHT (0 SIZE) WHEN PLOTTED AT A SCALE OF 1:1000. INTEGRATED SURVEY AREA NO. 23 KAWLOOPS MADRS(CRS) 4.0.0.BC.1 GRID BEARINGS ARE DERIVED FROM GNSS OBSERVATIONS BETWEEN GEODETIC CONTROL MONUMENTS 776574 AND 776583 AND ARE REFERRED TO THE CENTRAL MERIDIAN OF UTM ZONE 10. THE UTM COORDINATES AND ESTIMATED HORIZONTAL POSITIONAL ACCURACY ACHIEVED ARE DERIVED FROM GNSS OBSERVATIONS TO GEODETIC CONTROL MONUMENTS.

THIS PLAN SHOWS HORIZONTAL-GROUND-LEVEL DISTANCES UNLESS OTHERWISE SPECIFIED. TO COMPUTE GRID DISTANCES, MULTIPLY GROUND-LEVEL DISTANCES BY THE AVERAGE COMBINED FACTOR OF 0.99997935 WHICH HAS BEEN DERIVED FROM 776574 AND 776583.

LEGEND

- ...STANDARD IRON POST FOUND
- ...STANDARD IRON POST PLOTTED
- ◐...CONTROL MONUMENT
- ◑...LEAD PLUG FOUND
- ...LEAD PLUG PLOTTED
- ☐...DENOTES NOTHING FOUND

NOTE: THIS PLAN SHOWS ONE OR MORE WITNESS POSTS WHICH ARE NOT SET ON THE TRUE CORNER(S).

THIS PLAN LIES WITHIN THE JURISDICTION OF THE APPROVING OFFICER FOR THE CITY OF KAWLOOPS.

THIS PLAN LIES WITHIN THE THOMPSON-NICOLA REGIONAL DISTRICT.

THE FIELD SURVEY REPRESENTED BY THIS PLAN WAS COMPLETED ON THE 24TH DAY OF NOVEMBER, 2016.

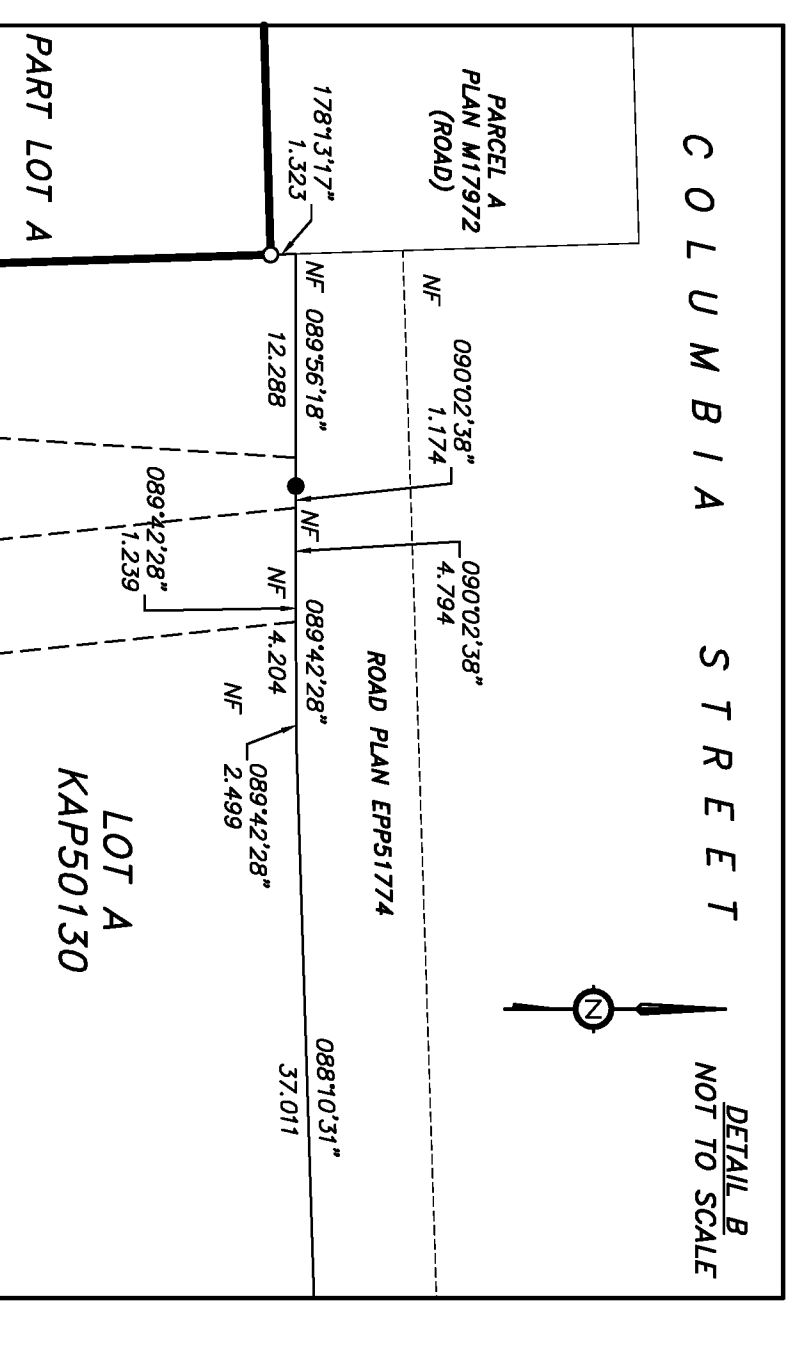
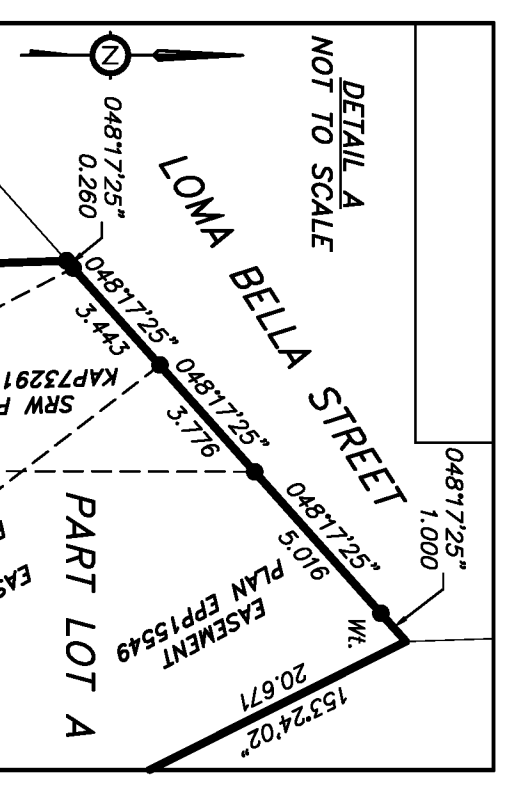
MARISSA MOORE, BCLS #698

TABLE OF CONTROL MONUMENTS

DATUM: NAD83(CRS) 4.0.0.BC.1

UTM ZONE 10

POINT	NORTHING	EASTING	COMBINED SCALE FACTOR	ESTIMATED HORIZONTAL POSITIONAL ACCURACY
776574	5618675.827	688142.800	0.9999772	0.03
776583	5618683.581	688681.630	0.9999815	0.03



Land Surveyors

Allnorth

#301 - 7 ST. PAUL STREET WEST
KAWLOOPS, BC, V2C 1E9
TEL: 250-371-5344
DRAWING NO.: 16150671 REF
FILE NO.: 16150671
FB: 453 P: 50-53