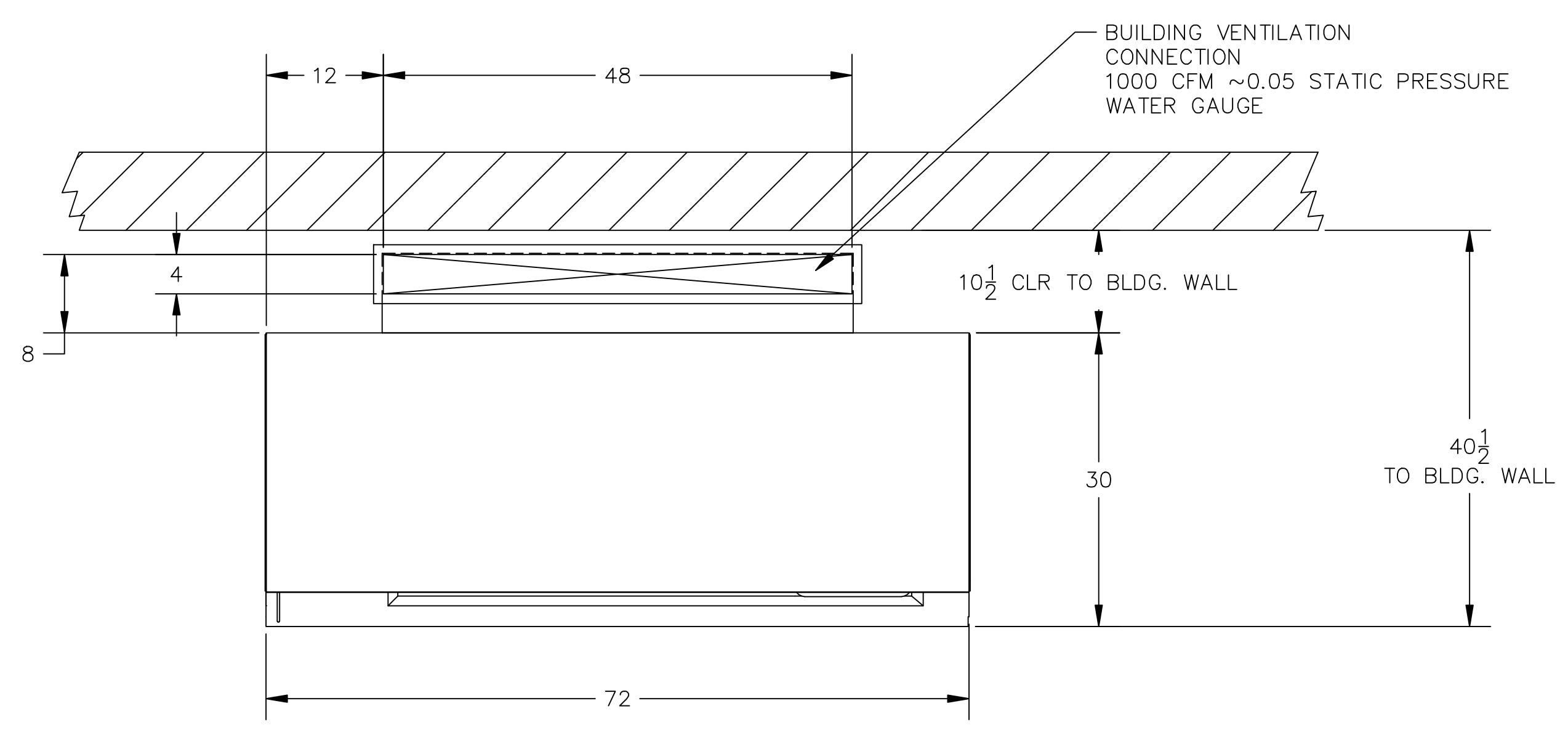


RevNo	Revision note	Date	Signature	Checked



UTILITY CONNECTION

- DRAIN (D): 2" VENTED & TRAPPED
- WATER (H & C): 1/2" HARD COPPER, HOT AND COLD WITH A 1/4 TURN SHUT OFF VALVE PROVIDED BY OTHERS
- ELECTRICAL (E): (2) CIRCUITS
(1) 115/1/60, 20 AMPS, (REQUIRED)
(1) 115/1/60, 20 AMPS, (IF DISPOSAL IS DESIRED)
- VENTILATION: VENTILATION STUB TO BUILDING VENTILATION
4" X 48" VENTILATION CONNECTION WITH MOUNTING FLANGE AND HARDWARE

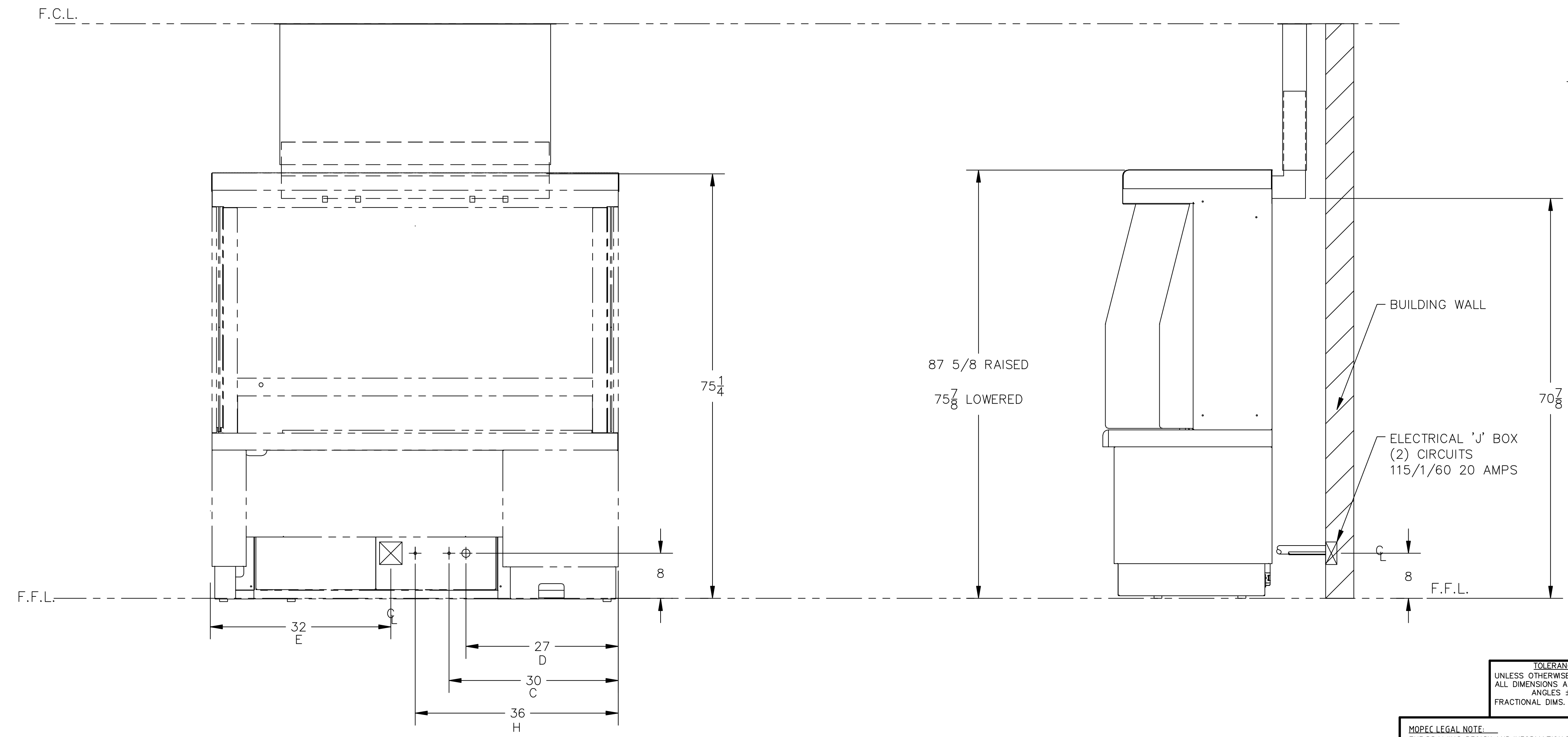
PERMITS:

MOPEC AND ITS CONTRACTED INSTALLERS DO NOT PULL PERMITS OF ANY TYPE (E.G., ELECTRICAL, PLUMBING, MECHANICAL) FOR INSTALLING EQUIPMENT.

IT IS THE CUSTOMER'S RESPONSIBILITY TO ACQUIRE ANY AND ALL NECESSARY CONSTRUCTION PERMITS BEFORE INSTALLATION OF EQUIPMENT.

UTILITY CONNECTION LEGEND

- E = ELECTRICAL CONNECTION
- H = HOT WATER CONNECTION/LOCATION
- C = COLD WATER CONNECTION/ LOCATION
- D = VENTED AND TRAPPED DRAIN CONNECTION/LOCATION



F.F.L. = FINISHED FLOOR LINE

FOR REFERENCE ONLY

<p>TOLERANCE UNLESS OTHERWISE SPECIFIED ALL DIMENSIONS ARE IN INCHES ANGLES ± .5° REF FRACTIONAL DIMS. < 4' = ±1/8" > 4' = ±1/4"</p>		QTY	ITEM #	DESCRIPTION	DRAWING #	PART #
<p>MOPEC LEGAL NOTE THE DRAWING, DESIGN AND INFORMATION PROVIDED IS INTENDED TO BE USED SOLELY BY THE CUSTOMER AS A REFERENCE. UNAUTHORIZED DISCLOSURE TO THIRD PARTIES, USE, DUPLICATION, EDITING OR MODIFICATIONS, WITHOUT PRIOR WRITTEN PERMISSION FROM MOPEC INC., IS STRICTLY FORBIDDEN AND IS IN VIOLATION OF U.S. COPYRIGHT LAWS AND WILL BE SUBJECT TO CIVIL DAMAGES AND PROSECUTION.</p>		<p>CUSTOMERS NAME: XXX CITY, STATE: XXX</p>		<p>PROJECT# XXX</p>		
Drawn by: DH	SO #	Date 01/21/10	Scale 1:12		MG100 GROSSING STATION - SINK RIGHT IN-HOUSE (ROUGH-IN)	
<p>Mopec mopec.com</p>		<p>21750 COOLIDGE HWY. OAK HAVEN, MI 48867</p>		DRAWING # CD450	Rev. 0	Sheet size D