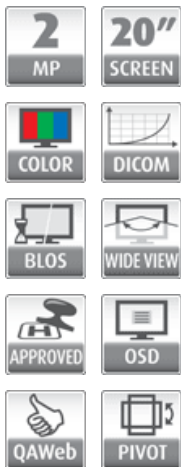
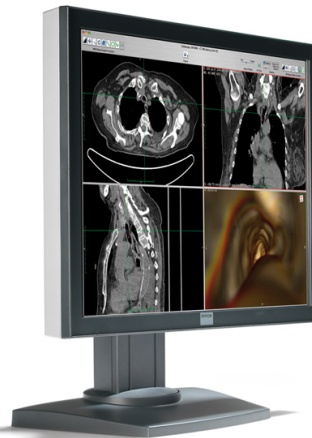


MDRC-2120

20-inch clinical review display



The MDRC-2120 is a 2 MegaPixel clinical review display for hospital-wide viewing of clinical data and images. The 20-inch display brings reliable, DICOM-compliant images to a broad palette of imaging applications, including the EMR system.

Consistent DICOM images, anywhere, anytime

The MDRC-2120's **high-quality LCD panel** presents medical images with better contrast, higher brightness and a wider viewing angle than conventional computer monitors.

Advanced **Backlight Output Stabilization (BLOS) technology** ensures fast power-up and continuous LCD backlight stability, resulting in long-term image consistency.

And thanks to the integrated DICOM Part 14 Look-Up Table, the MDRC-2120 is **DICOM-compliant "out-of-the-box"**.

A perfect fit for dental practices

Its long-term image accuracy and high-standard patient safety also make the MDRC-2120 a perfect fit for digital dental imaging.

BARCO

Visibly yours

Technical specifications

Screen technology	TFT Color LCD IPS
Active screen size (diagonal)	511 mm (20.1")
Active screen size (H x V)	408 x 306 mm (16.1 x 12.5")
Aspect ratio (H:V)	4:3
Resolution	2MP (1600 x 1200)
Pixel pitch	0.2550 mm
Color imaging	Yes
Gray imaging	No
Color support	16.8 million
Viewing angle (H, V)	178°
Uniform Luminance Technology (ULT)	No
Per Pixel Uniformity (PPU)	No
Ambient Light Compensation (ALC)	No
Backlight Output Stabilization (BLOS)	Yes
I-Guard	No
Maximum luminance	300 cd/m²
DICOM calibrated luminance	180 cd/m²
Contrast ratio	800:1
Response time (Tr + Tf)	14 ms
Scanning frequency (H; V)	31.5-93.75 kHz; 59-61 Hz
Housing color	Dark gray
Video input signals	DVI-D Single Link VGA (DB15)
Video inout terminals	Separate H&V sync Composite sync on H Sync on Green supported
USB ports	1 upstream, 2 downstream
USB standard	1.1
Power requirements (nominal)	100-250V
Power consumption (nominal)	45W
Power save mode	Yes
Power management	DVI-DMPM states supported Power On state Active-Off state DPMS states supported
Dot clock	165 MHz
OSD languages	English, French, German, Spanish, Italian, Dutch, Simplified Chinese, Tadtional Chinese, Japanese, Korean
Dimensions with stand (W x H x D)	Landscape: 455 x 536~426 x 223 mm
Dimensions w/o stand (W x H x D)	Portrait: 354 x 455 x 157 mm Landscape: 455 x 354 x 157 mm
Dimensions packaged (W x H x D)	554 x 525 x 330 mm
Net weight with stand	8.7 kg
Net weight w/o stand	6.0 kg
Net weight packaged with stand	11.7 kg

Net weight packaged w/o stand	9.0 kg
Height adjustment range	100 mm
Tilt	-0° / +10°
Swivel	-45° / +45°
Pivot	90°
Mounting standard	VESA (100 mm)
Screen protection	Optional protective front cover
Recommended modalities	CT, MR, US, DR, CR, NM, Film
Certifications	EN 60601-1-2 (2001), EN 55011 (Class B), IEC 61000-3-2, IEC 61000-3-3, IEC 61000-4-2, IEC 61000-4-3, IEC 61000-4-4, IEC 61000-4-5, IEC 61000-4-11, IEC 61000-4-6, IEC 61000-4-8, CE, EN 60601-1 Medical Part 1, FCC B, c-ul, PSE, BSMII, VCCI, CCC, KCC, CSA c22.2 No 601.1, UL50501-1
Supplied accessories	User manual Video cables (DVI Single Link, Analog) Main cables (UK, European (CEBEC/KEMA), USA (UL/CSA; adaptor plug NEMA 5-15P), Chinese (CCC)) External power supply
Optional accessories	Barco External Medical LCD Display Sensor Barco MDRC-2120 Clinical Review Medical LCD Display Protective Front Cover Kit
QA software	MediCal QAWeb
Units per pallet	18
Pallet dimensions (W x H)	800 x 1200 mm
Warranty	3 years