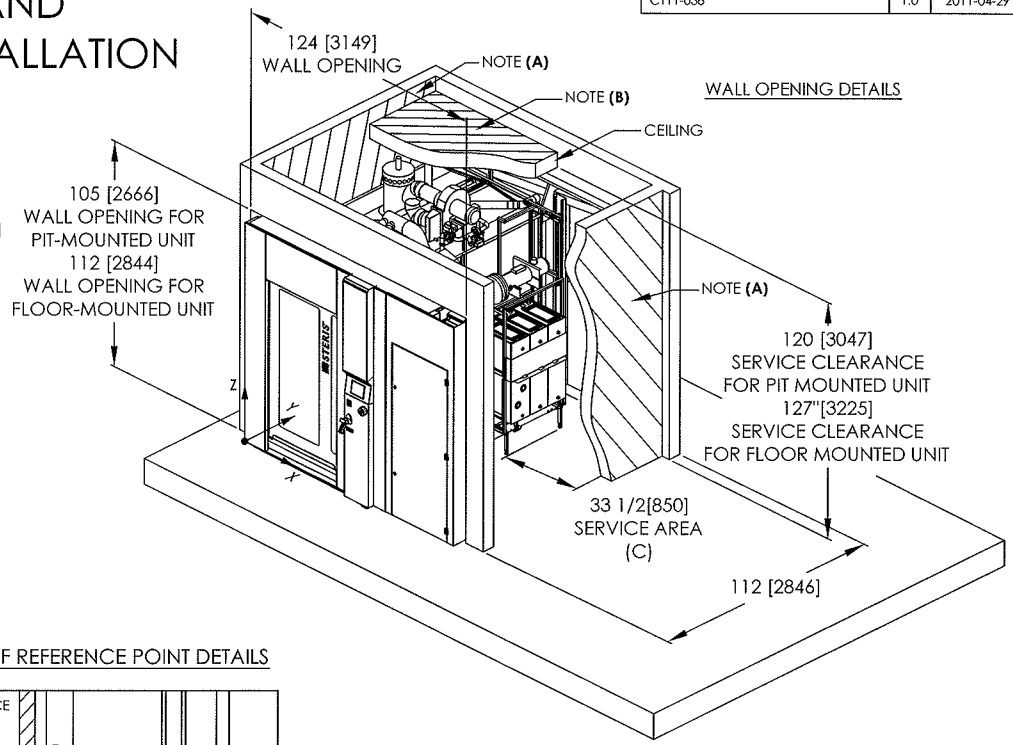
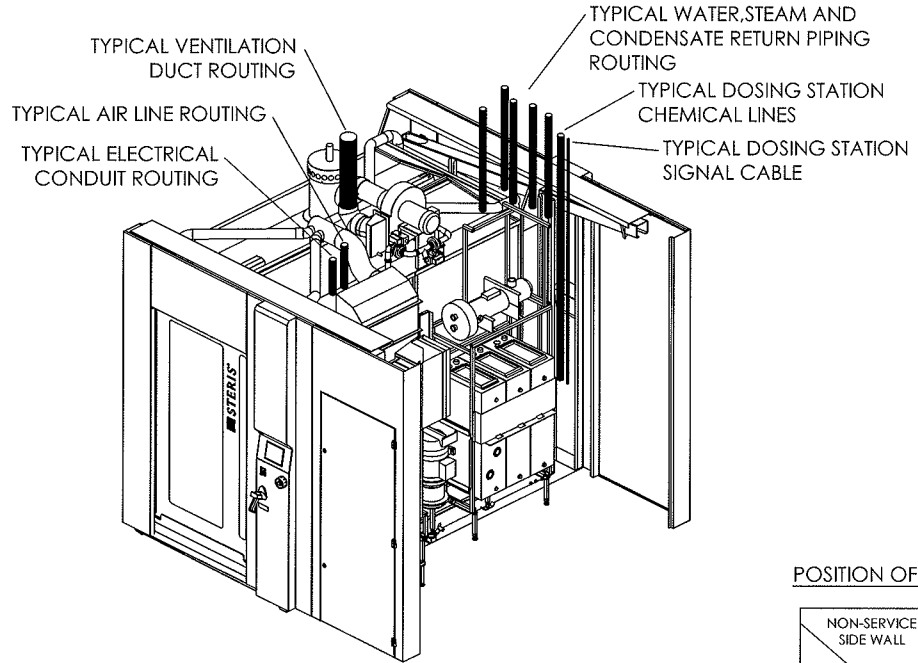
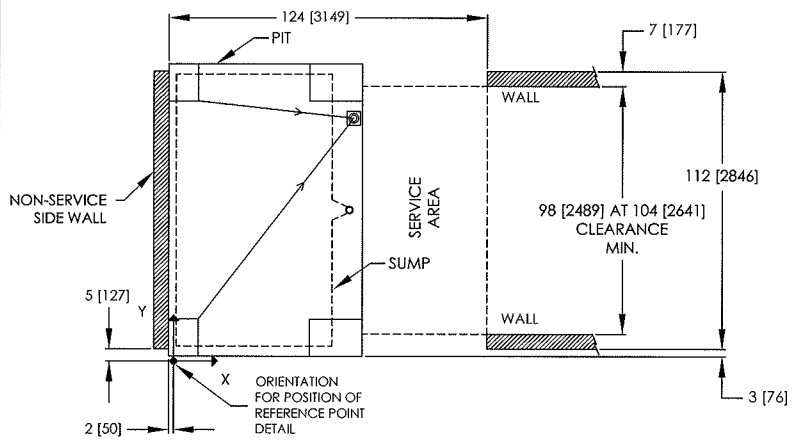
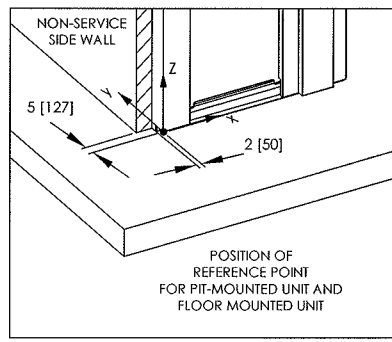


WALL AND TYPICAL INSTALLATION



POSITION OF REFERENCE POINT DETAILS



GENERAL NOTES:

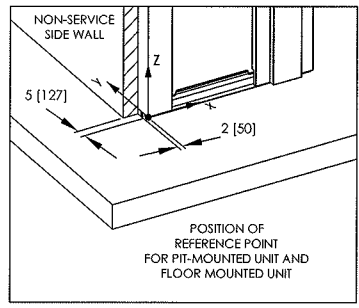
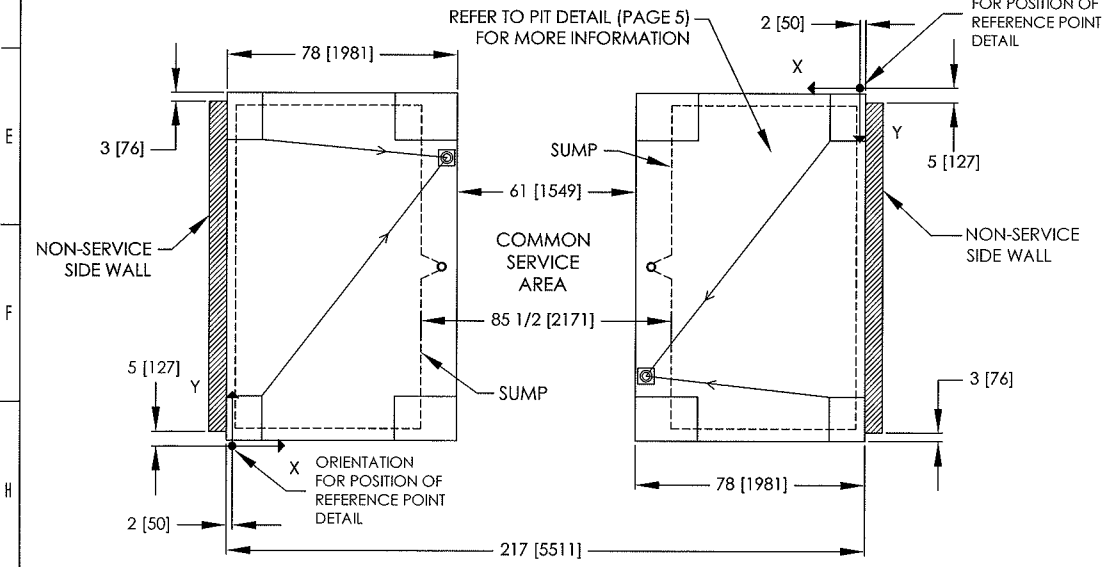
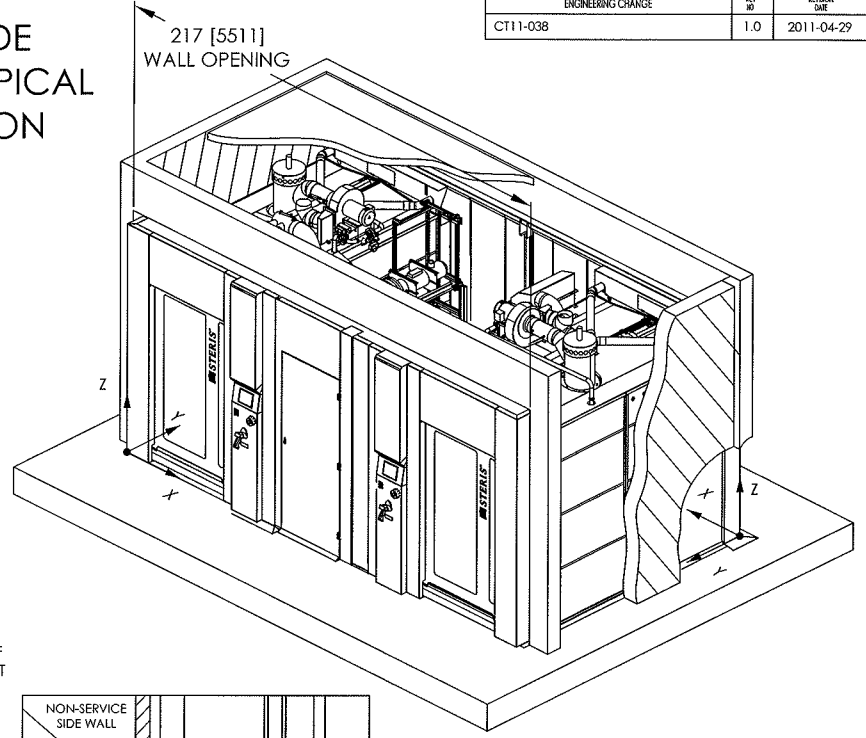
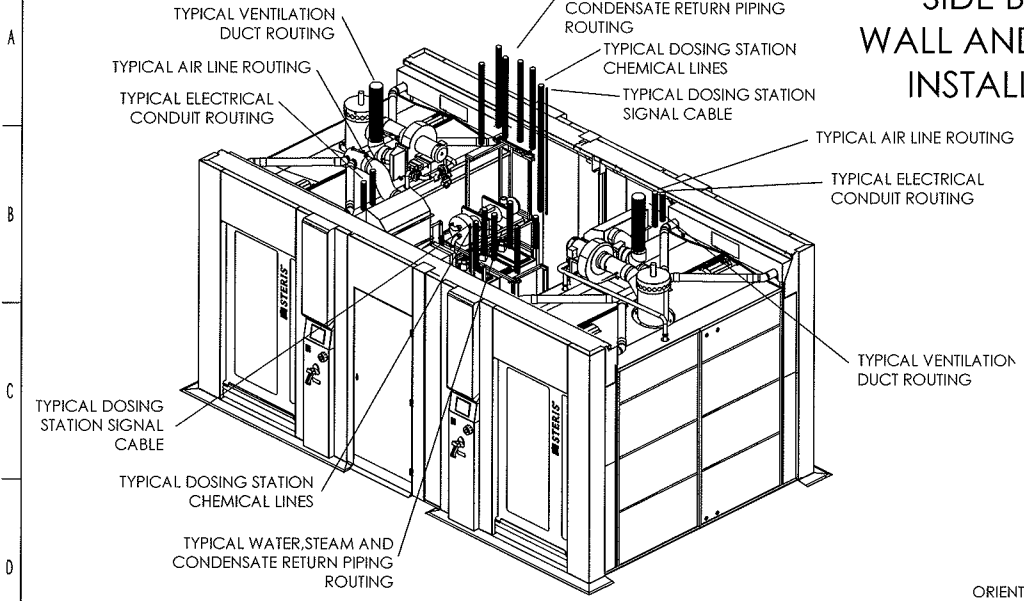
1. ALLOW SUFFICIENT SPACE TO LOAD AND UNLOAD CARTS AND UTENSILS (PLUS LENGTH OF RAMP(S), IF APPLICABLE).
2. AIR LINE, ELECTRICAL CONDUIT, DUCT WORK, STEAM PIPING, CONDENSATE RETURN PIPING AND WATER PIPING SHOULD BE ROUTED ABOVE WASH CHAMBER AS INDICATED TO AVOID INTERFERING WITH SERVICE OF COMPONENTS ON WASHER ROOF.

NOTE (A) : WALLS COULD BE BUILDING WALL OR OPTIONAL SERVICE OR NON-SERVICE S/S PANELS.
 NOTE (B) : DECK / IF PRESENT
 NOTE (C) : FOR STANDARD THROUGH-WALL UNIT, CLEARANCE BETWEEN CLOSED DOOR OF ELECTRIC CABINET AND FACILITY WALL, OR ANY FIXTURE, OPPOSITE MUST BE AT LEAST 36" [914].

		STERIS Canada Corporation <small>The document contains confidential and proprietary information of STERIS Corporation. Neither this document nor the information herein may be reproduced, distributed, used or disclosed, without the prior written consent of STERIS Corporation.</small>	TITLE VISION® 1327 CART AND UTENSILS WASHER/DISINFECTOR
DRN. MG. CD. <i>MG</i> DATE 2007-12-01 DATE <i>2011/05/02</i>	BKG. <i>FC</i> DATE <i>2011/05/03</i>	DWG. NO. 920-513-916	1 SHEET OF 13

AR000006

SIDE BY SIDE WALL AND TYPICAL INSTALLATION



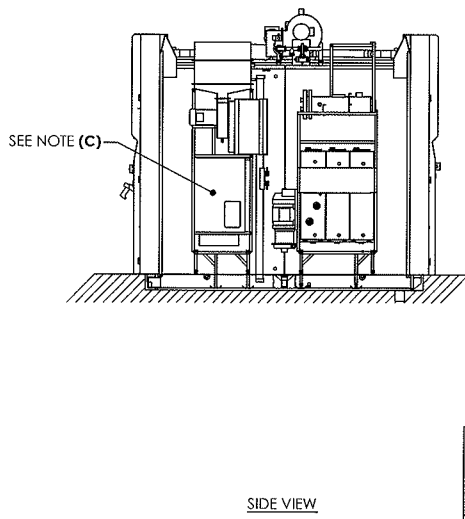
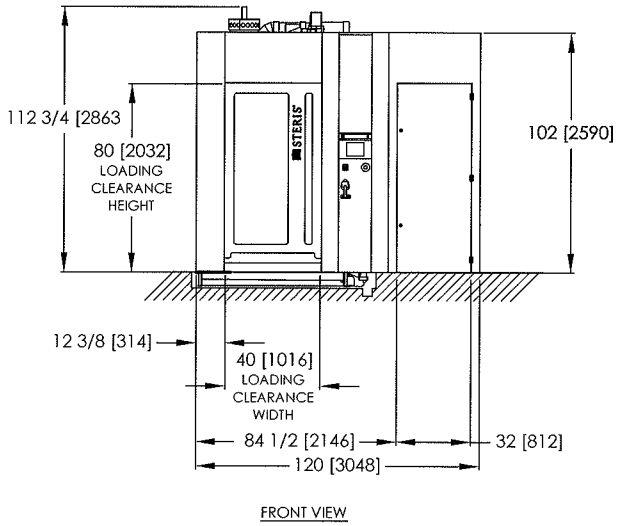
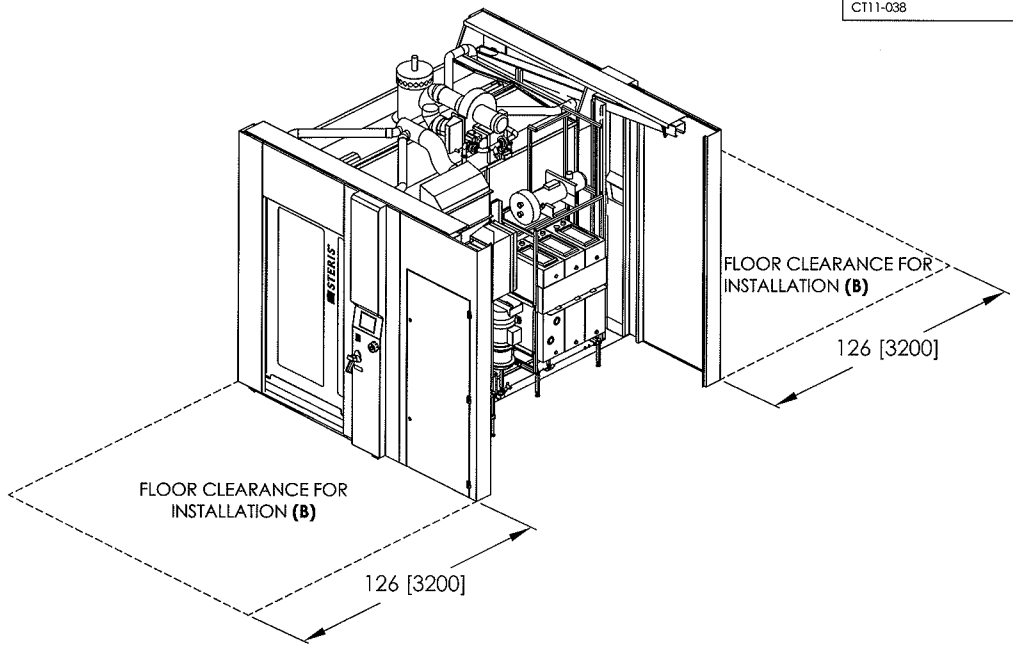
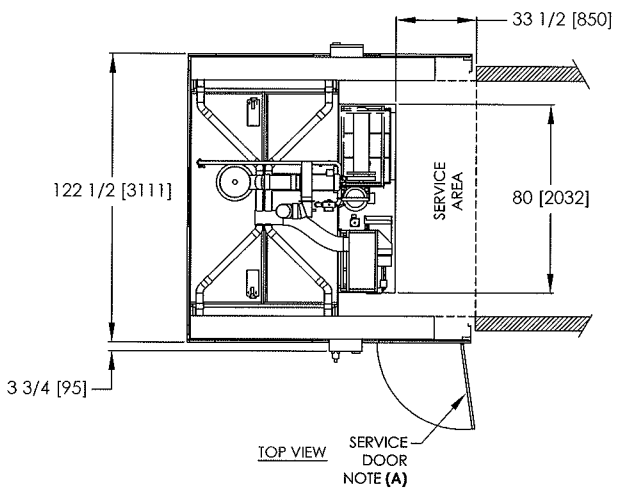
GENERAL NOTES:

- FOR TWO UNITS WITH SERVICE AREA BETWEEN, CLEARANCE BETWEEN CLOSED DOORS OF ELECTRIC CABINETS AND NEAREST PART OF OTHER WASHER, OR ANY FIXTURE BETWEEN, MUST BE AT LEAST 41 1/2 [1054]

		STERIS Canada Corporation <small>The document contains confidential and proprietary information of STERIS Corporation. Neither this document nor the information herein are to be reproduced, distributed, used or disclosed, either in part or in whole, except as specifically authorized by STERIS Corporation.</small>	TITLE VISION® 1327 CART AND UTENSILS WASHER/DISINFECTOR
DRN: 920-513-916 DATE: 2009-12-01	CDD: M16 DATE: 2011/05/10	ENG: F.L. DATE: 2011/08/03	DWG. NO.: 920-513-916 SHEET OF 13

#RCD006

PIT-MOUNTED UNIT



GENERAL NOTES:

1. CUSTOMER MUST BE SURE THAT MACHINE STANDS ON A NON-COMBUSTIBLE FLOOR.
2. ALLOW SUFFICIENT SPACE TO LOAD / UNLOAD CARTS (ACCORDING TO CUSTOMER CARTS DIMENSION)
 CONTAINER 63 1/2 [1612] LG
 UTENSIL 65 1/2 [1663] LG
 INSTRUMENT 65 [1651] LG
3. A-WEIGHTED EQUIVALENT SURFACE SOUND PRESSURE LEVEL: 65 dB(A)
4. SEE SUMP PIT DETAILS FOR ADDITIONAL POSITIONING INFORMATION.

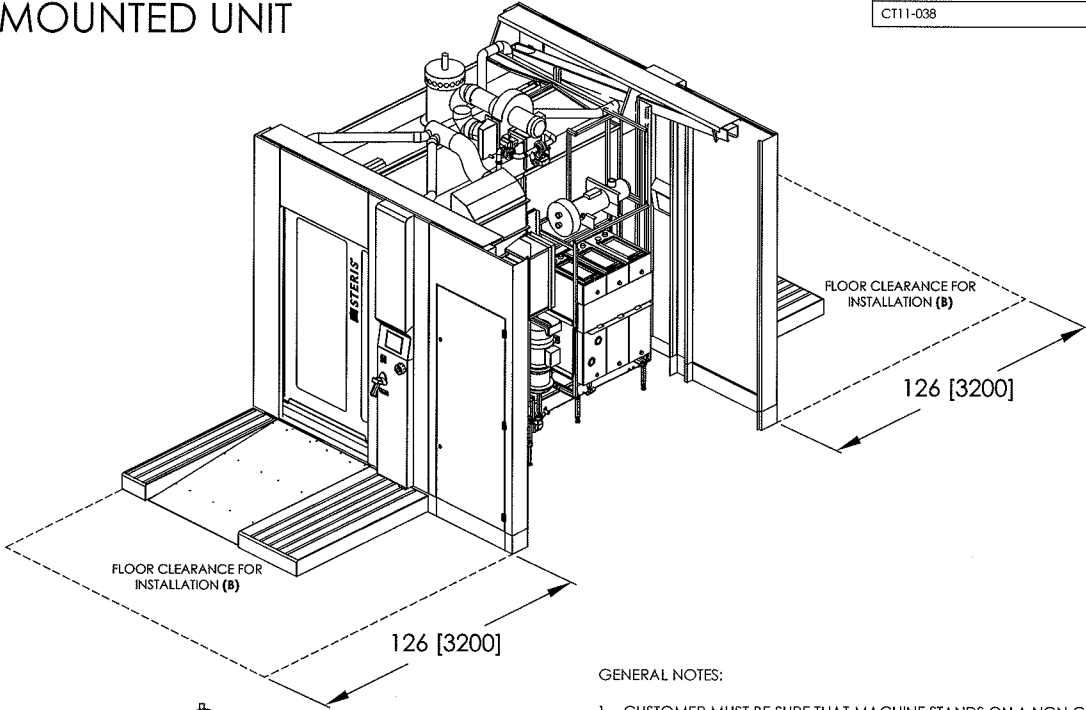
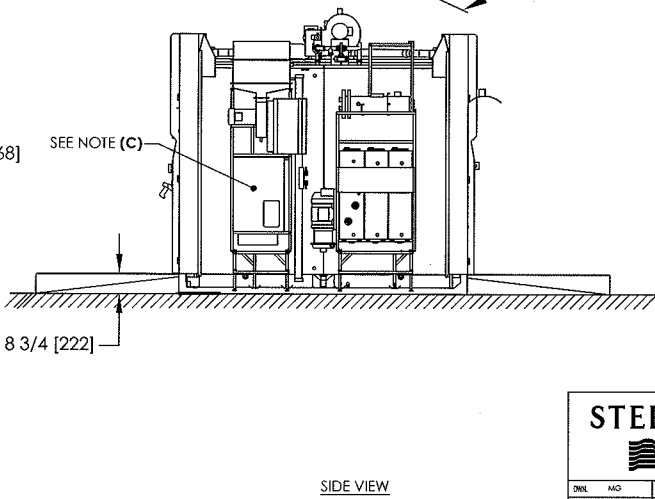
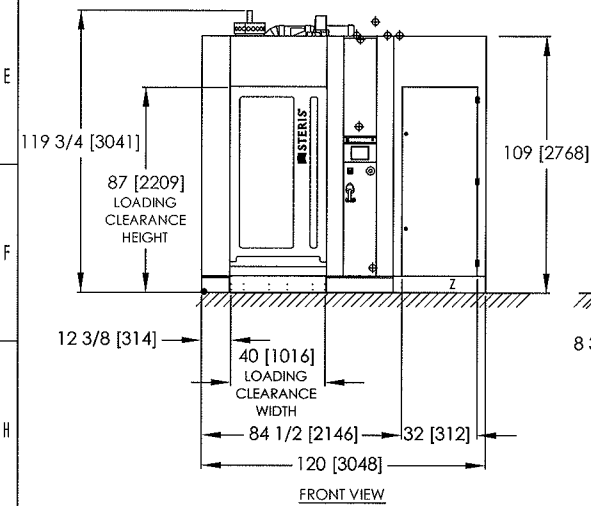
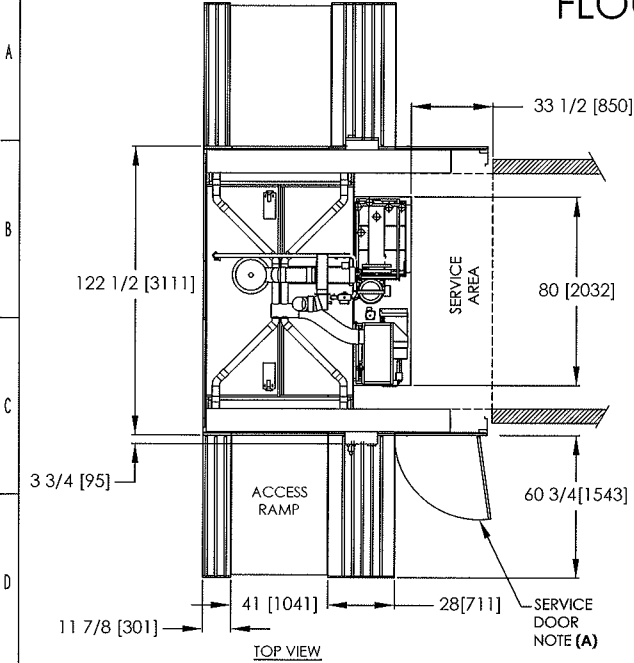
NOTE (A) : SERVICE AREA ACCESS DOOR IS INSTALLED ON LOAD SIDE OF THE WASHER. LOAD SIDE CAN BE EITHER ON LEFT OR RIGHT SIDE OF THE MECHANICAL CORE.
 NOTE (B) : IF RECOMMENDED FLOOR CLEARANCE FOR INSTALLATION IS NOT AVAILABLE ADDITIONAL MANPOWER AND EQUIPMENT WILL BE REQUIRED.
 NOTE (C) : FOR STANDARD THROUGH-WALL UNIT, CLEARANCE BETWEEN CLOSED DOOR OF ELECTRIC CABINET AND FACILITY WALL, OR ANY FIXTURE, OPPOSITE MUST BE AT LEAST 36" [914].

		STERIS Canada Corporation <small>This document contains confidential and proprietary information of STERIS Corporation. Neither the document nor the information herein are to be reproduced, distributed, used or disclosed, either in part or in whole, except as specifically authorized by STERIS Corporation.</small>		TITLE VISION® 1327 CART AND UTENSILS WASHER/DISINFECTOR	
DRW. M6 DATE 2009-12-01	CDR. M6 DATE 2011/05/10	ENR. FC DATE 2011/05/10	DWG. NO. 920-513-916	3 SHEET OF 13	

AIRCORP INC.

FLOOR-MOUNTED UNIT

ENGINEERING CHANGE	REV NO	ISSUANCE DATE
CT11-038	1.0	2011-04-29



GENERAL NOTES:

1. CUSTOMER MUST BE SURE THAT MACHINE STANDS ON A NON-COMBUSTIBLE FLOOR.
2. ALLOW SUFFICIENT SPACE TO LOAD / UNLOAD CARTS (ACCORDING TO CUSTOMER CARTS DIMENSION)
CONTAINER 63 1/2 [1612] LG
UTENSIL 65 1/2 [1663] LG
INSTRUMENT 65 [1651] LG
3. A-WEIGHTED EQUIVALENT SURFACE SOUND PRESSURE LEVEL: 65 dB(A)
4. SEE SUMP PIT DETAILS FOR ADDITIONAL POSITIONING INFORMATION.

NOTE (A) : SERVICE AREA ACCESS DOOR IS INSTALLED ON LOAD SIDE OF THE WASHER. LOAD SIDE CAN BE EITHER ON LEFT OR RIGHT SIDE OF THE MECHANICAL CORE.

NOTE (B) : IF RECOMMENDED FLOOR CLEARANCE FOR INSTALLATION IS NOT AVAILABLE ADDITIONAL MANPOWER AND EQUIPMENT WILL BE REQUIRED.

NOTE (C) : FOR STANDARD THROUGH-WALL UNIT, CLEARANCE BETWEEN CLOSED DOOR OF ELECTRIC CABINET AND FACILITY WALL, OR ANY FIXTURE, OPPOSITE MUST BE AT LEAST 36" [914].

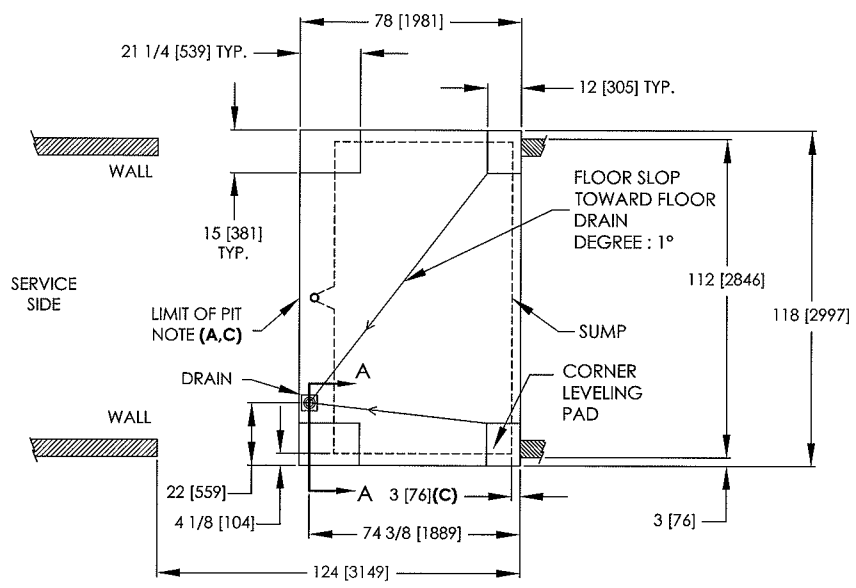
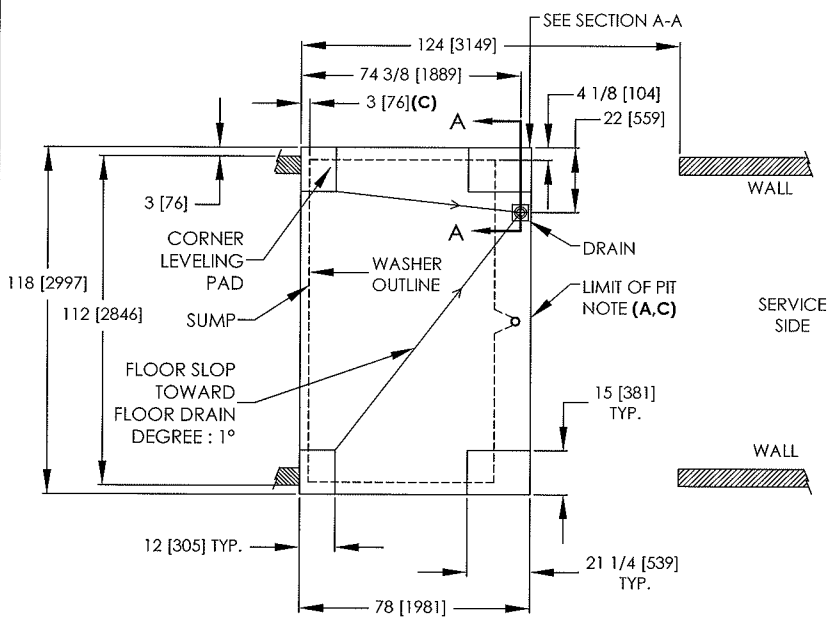
		STERIS Canada Corporation	TITLE VISION® 1327 CART AND UTENSILS WASHER/DISINFECTOR	
<small>DNK</small> <small>DATE</small> 2009-12-01	<small>MO</small> <small>DATE</small> 2011/05/02	<small>FR</small> <small>DATE</small> 2011/05/02	<small>DNK</small> <small>DATE</small> 2011/05/02	<small>DNK</small> <small>DATE</small> 2011/05/02
			<small>DNK</small> 920-513-916	4 SHEET OF 13

AUTOCAD

PIT

STANDARD ORIENTATION VIEW

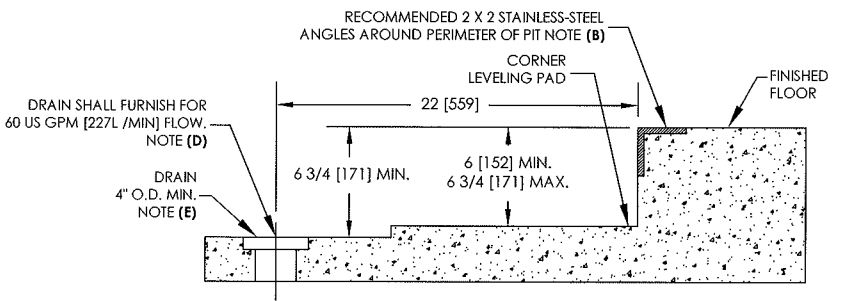
REVERSE ORIENTATION VIEW



GENERAL NOTES:

1. CUSTOMER MUST BE SURE THAT MACHINE STANDS ON A NON-COMBUSTIBLE FLOOR.
2. FOR STANDARD THROUGH-WALL UNIT, CLEARANCE BETWEEN CLOSED DOOR OF ELECTRIC CABINET AND FACILITY WALL, OR ANY FIXTURE, OPPOSITE MUST BE AT LEAST 36"[914].

NOTE (A) : THIS CART WASHER CAN FIT INTO AN EXISTING 76" PIT, BUT WITH RESTRICTED ACCESS TO COMPONENTS LOCATED IN THE PIT. THE DRAIN LOCATION MAY NEED TO BE RELOCATED.
 NOTE (B) : ALL MATERIALS (INCLUDING CONCRETE, PIT PADS, STAINLESS-STEEL ANGLES, FLOOR SINK,...) BY OTHERS THAN STERIS. SLOPE PIT FLOOR TO DRAIN. STAINLESS-STEEL ANGLES ARE RECOMMENDED BY STERIS BUT ARE NOT NECESSARY FOR WASHER INSTALLATION.
 NOTE (C) : FOR EXISTING 76" PIT WASHER, THE CLEARANCE WILL BE 2" INSTEAD OF 3".
 NOTE (D) : IF DRAIN COOLING SYSTEM IS ENABLED, MAX FLOW RATE IS 110-120 US GPM [416-454 L/MIN].
 NOTE (E) : RECOMMENDED MINIMUM 9" [228]mm FLOOR SINK WITH MINIMUM 4" [101]mm DRAIN OUTLET.

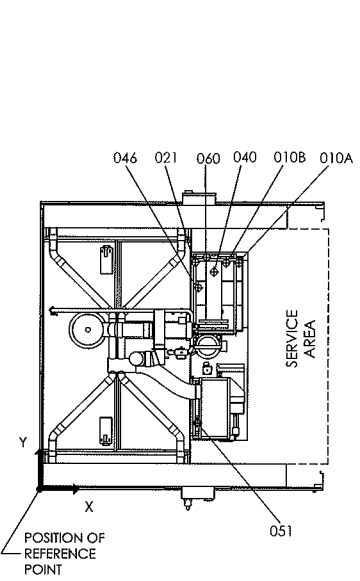


SECTION A-A

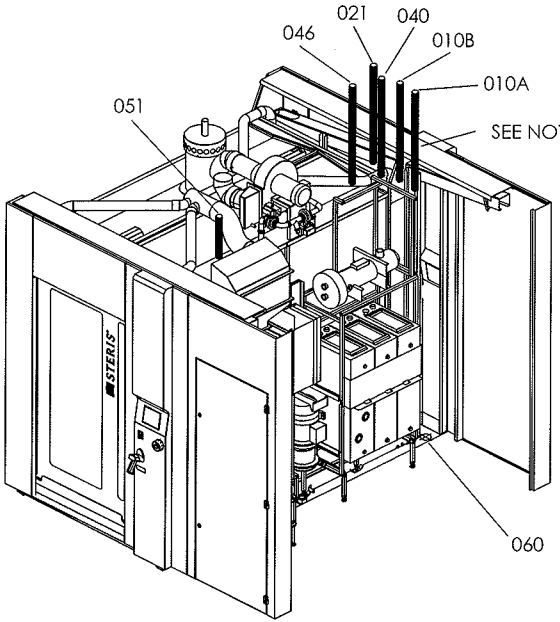
		STERIS Canada Corporation <small>This document contains confidential and proprietary information of STERIS Corporation. Neither this document nor the information herein are to be reproduced, distributed, used or disclosed, either in part or in whole, except as specifically authorized by STERIS Corporation.</small>	TITLE VISION® 1327 CART AND UTENSILS WASHER/DISINFECTOR
DWN: MGC DATE: 2009-12-04	CDR: M6 DATE: 2011-05-22	SNG: FC DATE: 2011-05-03	DWG. NO. 920-513-916 5 SHEET OF 13

AEC/03/06

UTILITY (PLUMBING) CONNECTION POSITION FOR PIT-MOUNTED UNIT



TOP VIEW

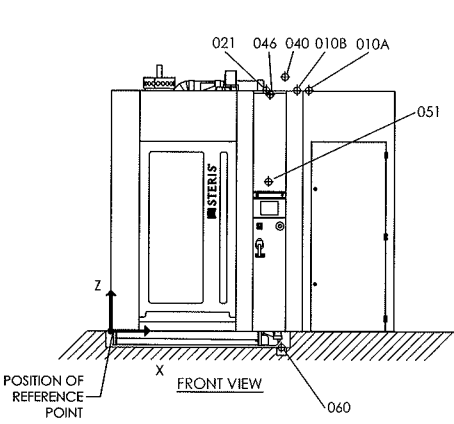


GENERAL NOTES:

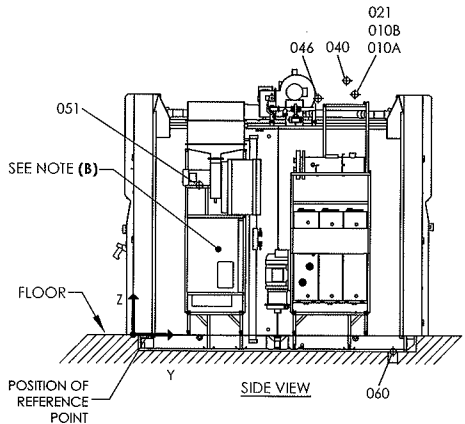
- EXTERNAL ISOLATION VALVES, UNIONS, VACUUM BREAKERS ON UTILITY LINES TO WASHER NOT PROVIDED BY STERIS.
- PIPE SIZES SHOWN INDICATE TERMINAL OUTLET ONLY FOR THE EQUIPMENT.
- ALL CONNECTIONS SHOULD BE IN ACCORDANCE WITH LOCAL CODES.
- SEE PAGE 1 FOR POSITION OF REFERENCE POINT DETAILS.
- MINIMUM INLET STEAM PRESSURE TAKES INTO ACCOUNT NATURAL PRESSURE LOSSES IN WASHER STEAM PLUMBING, AS WELL AS A CONDENSATE RETURN MAXIMUM RISE OF 17' [5.2 M], MEASURED FROM BASE OF WASHER OR AN EQUIVALENT PRESSURE LOSS. ANY ADDITIONAL PRESSURE LOSS WILL HAVE TO BE COMPENSATED EITHER BY INCREASING THE INLET STEAM PRESSURE, BEING CAREFUL NOT TO EXCEED ALLOCATED MAXIMUM, OR BY ENSURING THAT THE STEAM SUPPLY OF THE CUSTOMER TAKES CHARGE OF THE CONDENSATE RETURN AT THE LOCATION INDICATED.
- INSTALLATION OF A WATER HAMMER ARRESTOR (NOT BY STERIS) IS RECOMMENDED.
- A LOW PRESSURE CONDENSATE RETURN SYSTEM IS REQUIRED AND NOT TO EXCEED 10 PSIG.
- ALL OVER PRESSURE DEVICES TO CONTROL PRESSURE OF AIR, STEAM AND WATER ARE NOT INCLUDED. IT IS RESPONSIBILITY OF CUSTOMER TO INSTALL THOSE EQUIPMENT ON MAIN UTILITIES.**
- CUSTOMER MUST PROVIDE UTILITY CONNECTIONS WITH SHUTOFFS DISCONNECTS WITHIN 2 FEET OF THE PERIMETER OF THE EQUIPMENT AND BELOW THE CEILING DECK. STERIS (SELLER) INCLUDES FINAL HOOKUP OF THESE NECESSARY UTILITIES WHEN THE STERIS INSTALLATION PACKAGE IS PURCHASED.

NOTE (A) : DO NOT PLACE PIPING IN SERVICE ACCESS AREA, SEE PAGE 1 FOR TYPICAL INSTALLATION.

NOTE (B) : SIGNAL AVAILABLE FOR PURE WATER REQUEST INSIDE ELECTRICAL BOX. -SEE UTILITY ELECTRICAL PAGE -INSTALL BY ELECTRICIAN ONLY



FRONT VIEW



SIDE VIEW

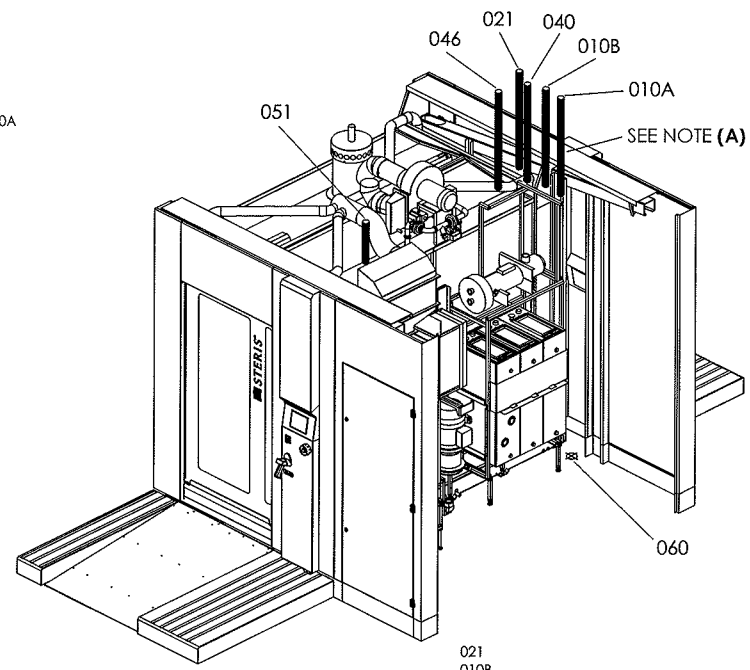
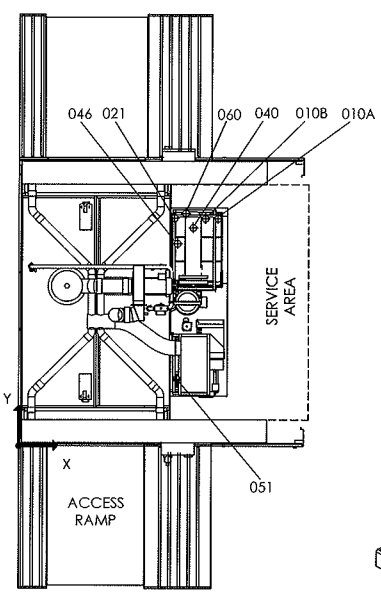
CONNECTION POSITION WITH REFERENCE POINT

	DESCRIPTION	X	Y	Z
010A	HOT WATER	83 3/4 [2114]	96 1/4 [2444]	102 1/4 [2597]
010B	COLD WATER	78 3/8 [1990]	96 1/4 [2444]	102 1/4 [2597]
021	PURE WATER (OPTION)	65 3/8 [1660]	96 1/2 [2451]	102 [2590]
040	STEAM	73 1/4 [1860]	92 7/8 [2359]	107 7/8 [2740]
046	CONDENSATE RETURN	67 [1701]	85 1/4 [2165]	100 1/2 [2552]
051	AIR	66 5/8 [1692]	26 7/8 [682]	63 1/2 [1612]
060	DRAIN CONNECTION	72 3/8 [1838]	98 1/4 [2495]	-6 3/4 [-171]

	STERIS Canada Corporation	TITLE	VISION@ 1327 CART AND UTENSILS WASHER/DISINFECTOR
	<small>This document contains confidential and proprietary information of STERIS Corporation. Neither this document nor the information herein are to be reproduced, distributed, used or disclosed, either in part or in whole, except as specifically authorized by STERIS Corporation.</small>		
DWG. NO. 920-513-916	DATE 2011/05/02	DATE 2011/05/02	6 SHEET OF 13

UTILITY (PLUMBING) CONNECTION POSITION FOR FLOOR-MOUNTED UNIT

A
B
C
D
E
F
H

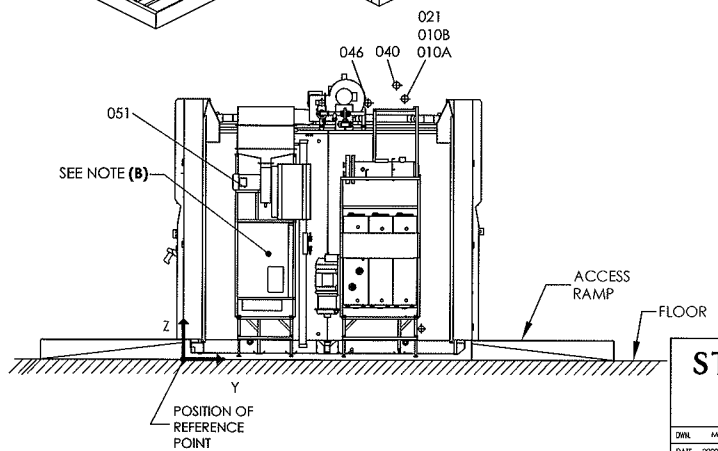
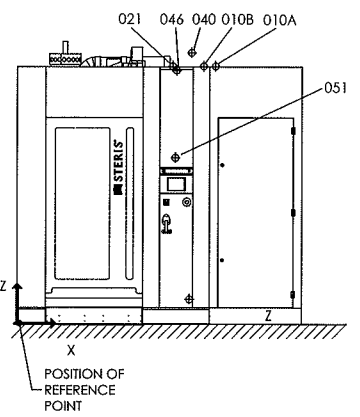


GENERAL NOTES:

- EXTERNAL ISOLATION VALVES, UNIONS, VACUUM BREAKERS ON UTILITY LINES TO WASHER NOT PROVIDED BY STERIS.
- PIPE SIZES SHOWN INDICATE TERMINAL OUTLET ONLY FOR THE EQUIPMENT.
- ALL CONNECTIONS SHOULD BE IN ACCORDANCE WITH LOCAL CODES.
- SEE PAGE 1 FOR POSITION OF REFERENCE POINT DETAILS.
- MINIMUM INLET STEAM PRESSURE TAKES INTO ACCOUNT NATURAL PRESSURE LOSSES IN WASHER STEAM PLUMBING, AS WELL AS A CONDENSATE RETURN MAXIMUM RISE OF 17' (5.2 M), MEASURED FROM BASE OF WASHER OR AN EQUIVALENT PRESSURE LOSS. ANY ADDITIONAL PRESSURE LOSS WILL HAVE TO BE COMPENSATED EITHER BY INCREASING THE INLET STEAM PRESSURE, BEING CAREFUL NOT TO EXCEED ALLOCATED MAXIMUM, OR BY ENSURING THAT THE STEAM SUPPLY OF THE CUSTOMER TAKES CHARGE OF THE CONDENSATE RETURN AT THE LOCATION INDICATED.
- INSTALLATION OF A WATER HAMMER ARRESTOR (NOT BY STERIS) IS RECOMMENDED.
- A LOW PRESSURE CONDENSATE RETURN SYSTEM IS REQUIRED AND NOT TO EXCEED 10 PSIG.
- ALL OVER PRESSURE DEVICES TO CONTROL PRESSURE OF AIR, STEAM AND WATER ARE NOT INCLUDED. IT IS RESPONSIBILITY OF CUSTOMER TO INSTALL THOSE EQUIPMENT ON MAIN UTILITIES.**
- CUSTOMER MUST PROVIDE UTILITY CONNECTIONS WITH SHUTOFFS DISCONNECTS WITHIN 2 FEET OF THE PERIMETER OF THE EQUIPMENT AND BELOW THE CEILING DECK. STERIS (SELLER) INCLUDES FINAL HOOKUP OF THESE NECESSARY UTILITIES WHEN THE STERIS INSTALLATION PACKAGE IS PURCHASED.

NOTE (A) : DO NOT PLACE PIPING IN SERVICE ACCESS AREA, SEE PAGE 1 FOR TYPICAL INSTALLATION.

NOTE (B) : SIGNAL AVAILABLE FOR PURE WATER REQUEST INSIDE ELECTRICAL BOX. -SEE UTILITY ELECTRICAL PAGE -INSTALL BY ELECTRICIAN ONLY



CONNECTION POSITION WITH REFERENCE POINT				
	DESCRIPTION	X	Y	Z
010A	HOT WATER	83 3/4 [2114]	96 1/4 [2444]	109 1/4 [2774]
010B	COLD WATER	78 3/8 [1990]	96 1/4 [2444]	109 1/4 [2774]
021	PURE WATER (OPTION)	65 3/8 [1660]	96 1/2 [2451]	109 [2768]
040	STEAM	73 1/4 [1860]	92 7/8 [2359]	114 7/8 [2917]
046	CONDENSATE RETURN	67 [1701]	85 1/4 [2165]	107 1/2 [2730]
051	AIR	66 5/8 [1692]	26 7/8 [682]	70 1/2 [1790]
060	DRAIN CONNECTION	72 3/8 [1838]	98 1/4 [2495]	0[0]

STERIS		STERIS Canada Corporation	TITLE VISION® 1327 CART AND UTENSILS WASHER/DISINFECTOR	
<small>This document contains confidential and proprietary information of STERIS Corporation. Neither this document nor the information herein are to be reproduced, distributed, used or disclosed, either in part or in whole, except as specifically authorized by STERIS Corporation.</small>				
DWG. NO.	920-513-916	DATE	2011/05/03	7 SHEET OF 13

GENERAL INFORMATIONS


GENERAL NOTES:

- SIZE OF THE HEAVIEST UNCRATED PIECE : (MECHANICAL CORE) 21" W X 68" H X 44" L [533 X 1727 X 1117].
- WEIGHT OF THE HEAVIEST UNCRATED PIECE : 1000 LBS [453kg]
- SHIPPING DIMENSION :
 CRATE A : 49" W X 95" H X 121" L [1245 X 2413 X 3073]
 CRATE B : 49" W X 95" H X 121" L [1245 X 2413 X 3073]
 CRATE C : 49" W X 95" H X 121" L [1245 X 2413 X 3073]
 CRATE D : 38" W X 68" H X 112" L [965 X 1727 X 2845]
 CRATE E : 36" W X 89 1/2" H X 70" L [914 X 2273 X 1778]
 CRATE F : 36" W X 93 1/2" H X 51" L [914 X 2374 X 1295]
 CRATE G : 49" W X 95" H X 121" L [1245 X 2413 X 3073]
- OPERATING WEIGHT Lb[kg]: - WITH CABINET, WATER AND TWO HEAVY CASE CARTS 7483 LBS [3400 kg]
 - WITHOUT CABINET, WITH WATER AND TWO HEAVY CASE CARTS 6367 LBS [2893 kg]
- OPENING AREA FROM SERVICE AREA TO CLEAN SIDE : LESS THAN 30 po² [19354]mm².

TYPICAL CYCLES				
		WASH	THERMAL	DRYING
	CYCLE	CART	CART	CART
HOT WATER (gal [L])	FIRST CYCLE	25	25	N/A
	CONSECUTIVE CYCLES	7	7	N/A
PURE WATER (gal [L]) OPTION (H)	FIRST CYCLE	N/A	25	N/A
	CONSECUTIVE CYCLES	N/A	7	N/A
COLD WATER (gal [L])	FIRST CYCLE	N/A	N/A	N/A
	CONSECUTIVE CYCLES	N/A	N/A	N/A
COLD WATER FOR DRAIN COOLING (gal [L])	IF RECYCLING	0 (I)	7 [26]	N/A
	NOT RECYCLING	0 (I)	46 [175]	N/A
STEAM (WITH HOT TAP WATER @ 140F [60C]) (lb [kg])	ALL	N/A	28[13]	3.4[1.5]
DETERGENT (PUC) (oz [ml])	FIRST CYCLE	2.5 [75]	0.5 [15]	N/A
	CONSECUTIVE CYCLES	0.7 [21]	0.14 [4.2]	N/A

- NOTE (A) : COMPRESSED AIR SPECIFICATIONS : AS PER ISO-8573-1 CLASS 5.
 - MAX. PARTICLE SIZE : 40 MICRONS
 - MAX. PARTICLE DENSITY : 10 MG/M³
 - MAX. DEW POINT FOR WATER CONTENT : 45°F (7°C)
 - MAX. OIL CONCENTRATION FOR THE OIL CONTENT : 25 MG/M³
 - A REFRIGERATED AIR DRYER IS RECOMMENDED WHERE ENVIRONMENTAL DEW POINT CONDITIONS ARE HIGHER THAN RECOMMENDED (CONTACT STERIS SALES REPRESENTATIVE).
- NOTE (B) : STEAM QUALITY: CLEAN AND DRY RECOMMENDED.
- NOTE (C) : IF DRAIN COOLING SYSTEM IS CHOSEN, MAX. FLOW RATE TO DRAIN IS 121 US GPM [458 L/MIN].
- NOTE (D) : OPTIMAL WASHER PERFORMANCES OBTAINED WHEN UTILITIES ARE PROVIDED AT MAX VALUE OF RANGE.
- NOTE (E) : OPTIMAL CLEANING EFFICIENCY WHEN HOT WATER IS AT A MAXIMUM OF 135° F [57.2°C].
- NOTE (F) : **ALL OVER PRESSURE DEVICES TO CONTROL PRESSURE OF AIR, STEAM AND WATER ARE NOT INCLUDED. IT IS RESPONSABILITY OF CUSTOMER TO INSTALL THOSE EQUIPMENT ON MAIN UTILITIES.**
- NOTE (G) : STERIS DOES NOT RECOMMEND INSTALLATION OF SPRINKLER OVER THE UNIT BUT IF REQUIRED BY LOCAL CODE IT MUST BE FUSE TO 260°F [126°C] OR ABOVE. ANY SPRINKLER HEADS IN FRONT OF THE LOAD/UNLOAD DOORS MUST ALSO BE FUSE TO 260°F [126°C] OR ABOVE.
- NOTE (H) : THIS CONSUMPTION REPLACES HOT WATER CONSUMPTION FOR THERMAL PHASE AND RINSE (IF PURE WATER OPTION).
- NOTE (I) : IF CYCLE SET POINT TEMPERATURE IS HIGHER THAN 140°F [60°C], THESE CONSUMPTIONS ARE EQUAL TO THERMAL PHASE CONSUMPTIONS.
- NOTE (J) : IF DRAIN COOLING SYSTEM IS ENABLED, MAX FLOW RATE IS 110-120 US GPM [416-454 L/MIN].
- NOTE (K) : RECOMMENDED MINIMUM 9" [228]mm FLOOR SINK WITH MINIMUM 4" [101]mm DRAIN OUTLET.

UTILITY REQUIREMENTS CHART (F) (G)								
DESCRIPTION	CONNECTION		PRESSURE RANGE (D)		OPERATING CONSUMPTION	TEMP. RANGE	AIR QUALITY	WATER QUALITY
	TYPE	SIZE	DYNAMIC	STATIC				
010A	HOT WATER	NPT BSPT	1 1	15-50 PSIG [1.0-3.4 BAR]	90 PSIG [6.2 BAR]	19-30 US GPM [72-114 L/MIN]	110-150 °F (E) [43-65.6 °C]	120 PPM
010B	COLD WATER	NPT	1	30-50 PSIG [1.4-3.4 BAR]	90 PSIG [6.2 BAR]	30-38.5 US GPM [114-146 L/MIN] (J)	40-70 °F [4.4-21 °C]	120 PPM
021	PURE WATER OPTION	NPT	1	5-50 PSIG [0.3-3.4 BAR]	90 PSIG [6.2 BAR]	12-28 US GPM [45-106 L/MIN]	180°F MAX [82°C]	0.1 MEGOMMCM
040	STEAM (B)	NPT BSPT	1-1/2 1-1/2	30-80 PSIG [2.1-5.5 BAR]	90 PSIG [6.2 BAR]	(900-1400) [LB/HR] (409-636) [KG/HR] PEAK: 1400 LB/H [636KG/H] FOR 90 sec.		
046	CONDENSATE RETURN	NPT BSPT	1 1	10 PSIG [0.7 BAR] MAX.		PEAK: 2.9 US GPM [11 L/MIN]		
051	COMPRESSED AIR	NPT BSPT	1/2 1/2	80 PSIG [5.5 BAR]	125 PSIG [8.6 BAR]	6 SCFM [0.17 M³/MIN]		(A)
060	DRAIN (K)	O.D.	4[101]			60 US GPM [227 L/MIN] (C)		

		STERIS Canada Corporation <small>This document contains confidential and proprietary information of STERIS Corporation. Neither this document nor the information herein are to be reproduced, distributed, used or disclosed, either in part or in whole, except as specifically authorized by STERIS Corporation.</small>	TITLE VISION® 1327 CART AND UTENSILS WASHER/DISINFECTOR
DWG. NO.	920-513-916	8 SHEET OF	13
DATE	2009-12-01	DATE	2011-05-02

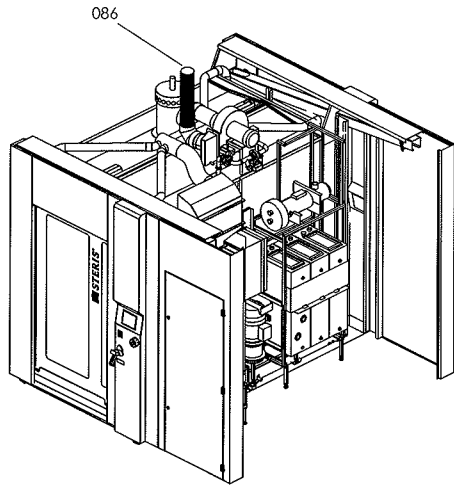
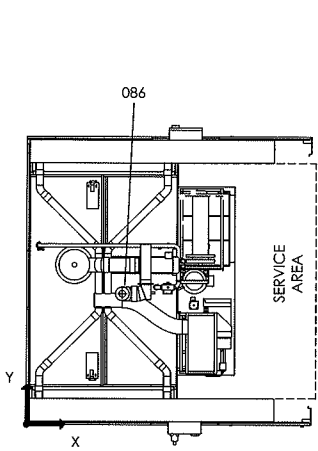
RECORDING

UTILITY (VENTILATION) FOR PIT-MOUNTED UNIT

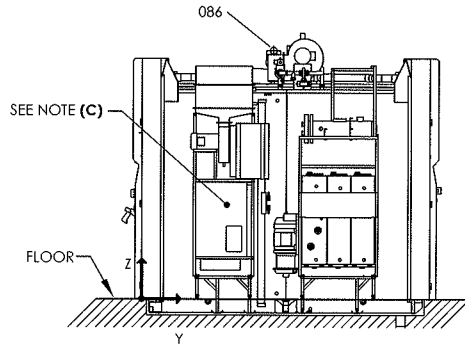
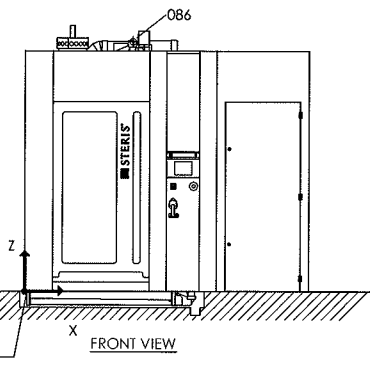
UTILITY REQUIREMENTS CHART					
DESCRIPTION	CONNECTION TYPE	CONNECTION		OPERATING CONSUMPTION (A) (D) 1000 SCFM, VAPOR EXHAUST AND DRYING [28.31 M ³ /MIN] 250 SCFM, WASH AND RINSE [7.07 M ³ /MIN]	NOMINAL TEMP. 212°F MAX. [100°C]
		MIN. SIZE			
086 VENTILATION (B)	O.D.	6 [152]			

- NOTE (A): - INSTALLATION OF EXTERNAL DUCTING FROM WASHER EXHAUST FAN TO THE EXTERIOR OF THE BUILDING (NOT BY STERIS) MUST NOT EXCEED 1" H₂O IN PRESSURE LOSS TO ENSURE OPTIMAL DRYING PERFORMANCE OF THE WASHER AND FAN MOTOR EFFICIENCY. IF PRESSURE LOSS OF EXTERNAL DUCTING EXCEEDS 1" H₂O, AN EXTERNAL FAN MUST BE INSTALLED TO COMPENSATE (NOT BY STERIS). THIS PRESSURE DROP MUST BE VALIDATED DURING INSTALLATION. SERVICE TECHNICIAN MUST FOLLOW THE INSTALLATION MANUAL PROCEDURE TO MEASURE THIS DATA:
- BUILDING DUCT MUST BE SCALED UP TO 10" [254 MM] O.D. MINIMUM AS CLOSE AS POSSIBLE TO WASHER DUCT CONNECTION (ADAPTOR FROM 6" TO BUILDING DUCT O.D. NOT PROVIDED BY STERIS).
 - FACILITY ROOM VENTILATION MUST COMPENSATE FOR WASHER EXHAUST FLOW RATE.
 - FOR ALL VENTILATION DUCTING FROM WASHER, STERIS RECOMMENDS INSTALLATION OF A DEDICATED CORROSION-PROOF AND WATERTIGHT DUCT RATED TO AN OPERATING TEMPERATURE OF 210°F (99°C) OR MORE TO THE EXTERIOR OF THE BUILDING, SLOPED TOWARD THE WASHER AND FREE OF DEAD LEGS.
- NOTE (B): EXHAUST FAN NORMALLY OPEN-AUXILIARY CONTACTS ARE AVAILABLE FOR LOW FLOW AND HIGH FLOW TO SUPPLY A SIGNAL TO THE FACILITY HVAC CONTROL SYSTEM WHENEVER THE CART WASHER VENTILATION EXHAUST FAN IS IN OPERATION. DO NOT PLACE DUCT WORK TO INTERFERE WITH SERVICE ACCESS AREA SEE PAGE 1 FOR TYPICAL INSTALLATION.
- NOTE (C): SIGNAL AVAILABLE FOR EXTERNAL VENTILATION CONTROL INSIDE ELECTRICAL BOX.
-SEE UTILITY ELECTRICAL PAGE
-INSTALL BY ELECTRICIAN ONLY
- NOTE (D): INTERNAL DRYING AND EXHAUST FANS PRODUCE 950 SCFM AND BUILDING EXHAUST NEEDS TO EXHAUST AT THE RATE OF 1000 SCFM.

- GENERAL NOTES:
1. ALL CONNECTIONS SHOULD BE IN ACCORDANCE WITH LOCAL CODES.
 2. SEE PAGE 1 FOR POSITION OF REFERENCE POINT DETAILS.



TOP VIEW



RELAY	FUNCTION
CR5	CYCLE IN OPERATION
CR6	LOW VENTILATION REQUEST (250 SCFM)
CR7	HIGH VENTILATION REQUEST (1000 SCFM)

HEAT LOSS - BTU/H AT 75°F [24°C] AVERAGE FOR PRE-PROGRAMMED CYCLE				
TO SERVICE AREA	RECESSED ONE WALL		RECESSED TWO WALLS	
	FRONT OF WALL	BACK OF WALL	AT EACH END	BETWEEN WALLS
13800 [4039 W]	4000 [1171 W]	9800 [2868 W]	4000 [1171 W]	5800 [1697 W]

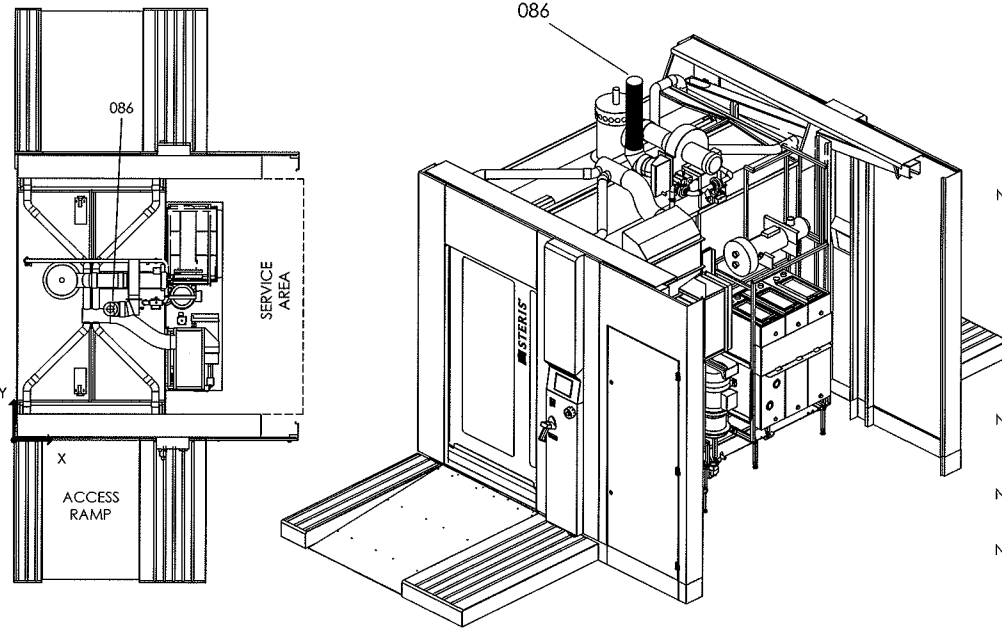
CONNECTION POSITION WITH REFERENCE POINT

DESCRIPTION	X	Y	Z
086 VENTILATION	40 3/8 [1025]	55 3/4 [1416]	105 1/4 [2673]

		STERIS Canada Corporation <small>This document contains confidential and proprietary information of STERIS Corporation. Neither this document nor the information herein are to be reproduced, distributed, used or disclosed, either in part or in whole, except as specifically authorized by STERIS Corporation.</small>		TITLE VISION® 1327 CART AND UTENSILS WASHER/DISINFECTOR	
DWN. MGC DATE 2009-12-01	CDR. MG DATE 2011/05/02	ENG. FF DATE 2011/05/03	DWN. NO. 920-513-916	9 SHEET OF 13	

RECORDING

UTILITY (VENTILATION) FOR FLOOR-MOUNTED UNIT



UTILITY REQUIREMENTS CHART					
	DESCRIPTION	CONNECTION		OPERATING CONSUMPTION (A) (D)	NOMINAL TEMP.
		TYPE	MIN. SIZE		
086	VENTILATION (B)	O.D.	6 [152]	1000 SCFM, VAPOR EXHAUST AND DRYING [28.31 M³/MIN] 250 SCFM, WASH AND RINSE [7.07 M³/MIN]	212°F MAX. [100°C]

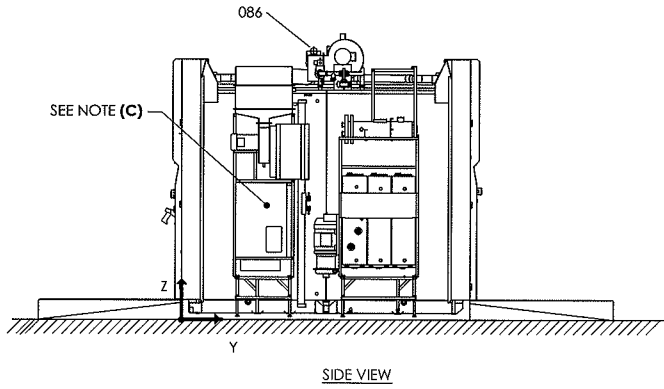
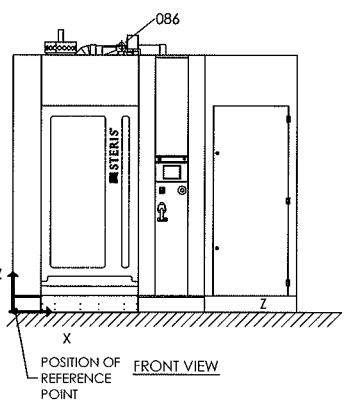
- NOTE (A): - INSTALLATION OF EXTERNAL DUCTING FROM WASHER EXHAUST FAN TO THE EXTERIOR OF THE BUILDING (NOT BY STERIS) MUST NOT EXCEED 1" H2O IN PRESSURE LOSS TO ENSURE OPTIMAL DRYING PERFORMANCE OF THE WASHER AND FAN MOTOR EFFICIENCY. IF PRESSURE LOSS OF EXTERNAL DUCTING EXCEEDS 1" H2O, AN EXTERNAL FAN MUST BE INSTALLED TO COMPENSATE (NOT BY STERIS). THIS PRESSURE DROP MUST BE VALIDATED DURING INSTALLATION. SERVICE TECHNICIAN MUST FOLLOW THE INSTALLATION MANUAL PROCEDURE TO MEASURE THIS DATA:
- BUILDING DUCT MUST BE SCALED UP TO 10" [254 MM] O.D. MINIMUM AS CLOSE AS POSSIBLE TO WASHER DUCT CONNECTION (ADAPTOR FROM 6" TO BUILDING DUCT O.D. NOT PROVIDED BY STERIS).
 - FACILITY ROOM VENTILATION MUST COMPENSATE FOR WASHER EXHAUST FLOW RATE.
 - FOR ALL VENTILATION DUCTING FROM WASHER, STERIS RECOMMENDS INSTALLATION OF A DEDICATED CORROSION-PROOF AND WATERTIGHT DUCT RATED TO AN OPERATING TEMPERATURE OF 210°F (99°C) OR MORE TO THE EXTERIOR OF THE BUILDING, SLOPED TOWARD THE WASHER AND FREE OF DEAD LEGS.
- NOTE (B): EXHAUST FAN NORMALLY OPEN-AUXILIARY CONTACTS ARE AVAILABLE FOR LOW FLOW AND HIGH FLOW TO SUPPLY A SIGNAL TO THE FACILITY HVAC CONTROL SYSTEM WHENEVER THE CART WASHER VENTILATION EXHAUST FAN IS IN OPERATION. DO NOT PLACE DUCT WORK TO INTERFERE WITH SERVICE ACCESS AREA SEE PAGE 1 FOR TYPICAL INSTALLATION.
- NOTE (C): SIGNAL AVAILABLE FOR EXTERNAL VENTILATION CONTROL INSIDE ELECTRICAL BOX.
 -SEE UTILITY ELECTRICAL PAGE
 -INSTALL BY ELECTRICIAN ONLY
- NOTE (D): INTERNAL DRYING AND EXHAUST FANS PRODUCE 950 SCFM AND BUILDING EXHAUST NEEDS TO EXHAUST AT THE RATE OF 1000 SCFM.

GENERAL NOTES:

1. ALL CONNECTIONS SHOULD BE IN ACCORDANCE WITH LOCAL CODES.
2. SEE PAGE 1 FOR POSITION OF REFERENCE POINT DETAILS.

RELAY	FUNCTION
CR5	CYCLE IN OPERATION
CR6	LOW VENTILATION REQUEST (250 SCFM)
CR7	HIGH VENTILATION REQUEST (1000 SCFM)

HEAT LOSS - BTU/H AT 75°F [24°C] AVERAGE FOR PRE-PROGRAMMED CYCLE				
TO SERVICE AREA	RECESSED ONE WALL		RECESSED TWO WALLS	
	FRONT OF WALL	BACK OF WALL	AT EACH END	BETWEEN WALLS
13800 [4039 W]	4000 [1171 W]	9800 [2868 W]	4000 [1171 W]	5800 [1697 W]

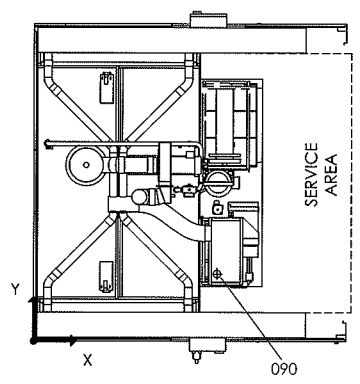


CONNECTION POSITION WITH REFERENCE POINT			
DESCRIPTION	X	Y	Z
086 VENTILATION	40 3/8 [1025]	55 3/4 [1416]	112 1/4 [2851]

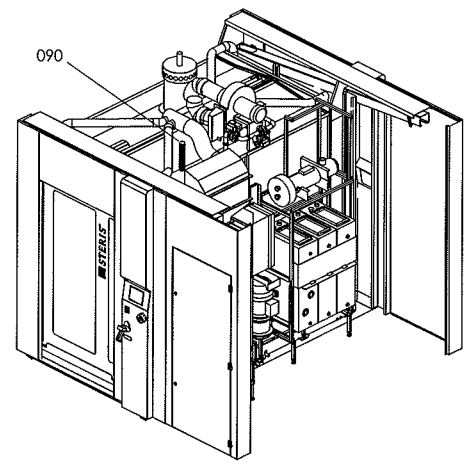
	STERIS Canada Corporation	TITLE VISION® 1327 CART AND UTENSILS WASHER/DISINFECTOR
	This document contains confidential and proprietary information of STERIS Corporation. Infringe this document or the information herein are to be reproduced, distributed, used or disclosed, without prior written consent, except as specifically authorized by STERIS Corporation.	
DWG. NO. 920-513-916 DATE 2009-12-01	CDR. <i>M6</i> DATE 2011/05/10	ENG. <i>FL</i> DATE 2011/05/03
DWG. NO. 920-513-916		10 SHEET 13

AEC00006

UTILITY (ELECTRICITY) FOR PIT-MOUNTED UNIT

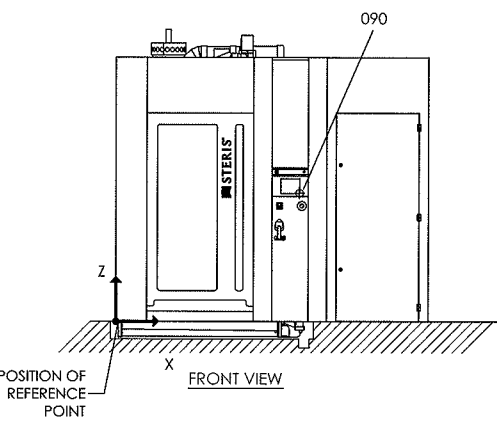


TOP VIEW

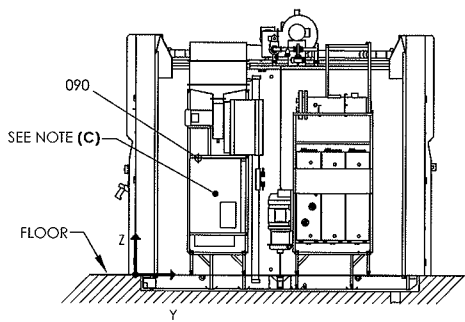


UTILITY REQUIREMENTS CHART			
DESCRIPTION		CONNECTION	
		TYPE	SIZE
090	ELECTRICITY (A)	CONDUIT	1 - 1 1/4 [35-44]

STANDARD CONFIGURED				
3- OPERATING VOLTAGE (B)	200 / 208V 50Hz	200 / 208V 60Hz	380 / 400 / 415V 50Hz	460 / 480V 60Hz
NOMINAL AMPERAGE	27.5A	25.5A	14.5A	13.5A
RECOMMENDED PROTECTION	40A	40A	20A	20A



FRONT VIEW



GENERAL NOTES:

- STERIS RECOMMENDS A LIGHT IN SERVICE AREA (IF APPLICABLE) ALONG WITH PROVISION OF A CONVENIENCE OUTLET FOR MAINTENANCE.
- BREAKERS AND FUSED DISCONNECT AS REQUIRED, ARE BY OTHERS.
- ALL CONNECTIONS SHOULD BE IN ACCORDANCE WITH LOCAL CODES.
- SEE PAGE 1 FOR POSITION OF REFERENCE POINT DETAILS.

NOTE (A) : SEE OPERATING VOLTAGE BOARD.
 NOTE (B) : NEUTRAL WIRE NOT REQUIRED.
 NOTE (C) : AUXILIARY DRY CONTACTS FOR CUSTOMER UTILITY CONTROL AVAILABLE INSIDE CONTROL BOX. SEE ELECTRICAL SCHEMATIC.

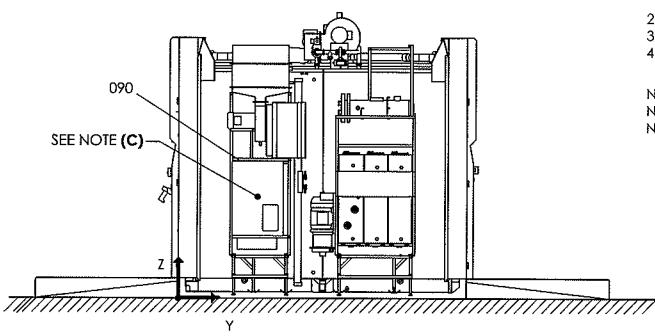
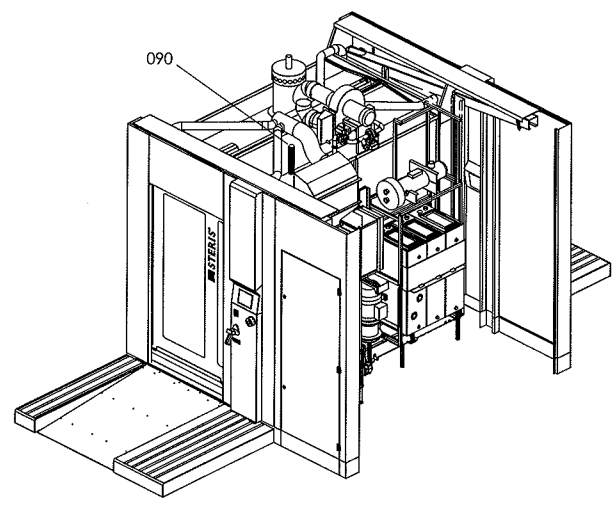
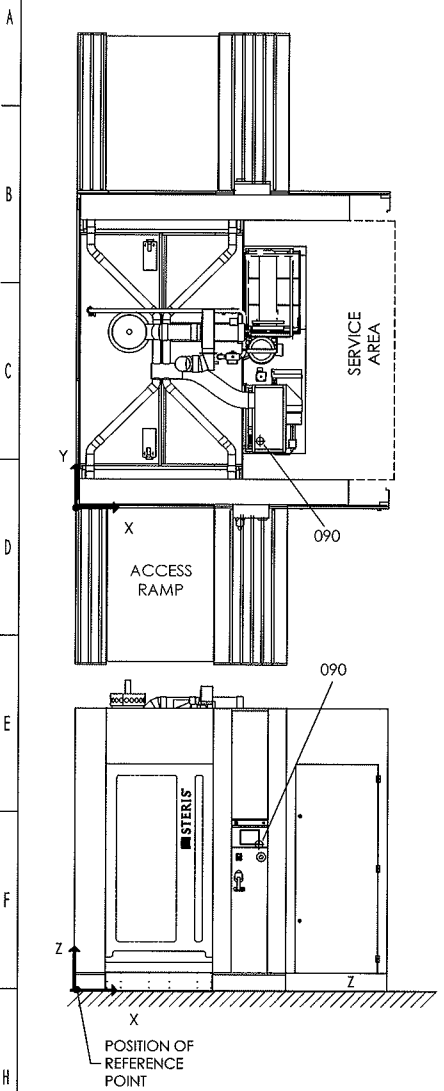
RELAY	FUNCTION
CR5	CYCLE IN OPERATION
CR6	LOW VENTILATION REQUEST
CR7	HIGH VENTILATION REQUEST
CR8	ALARM
CR9	CYCLE COMPLETE
CR10	HOT WATER REQUEST
CR11	PURE WATER REQUEST
CR12	COLD WATER REQUEST

CONNECTION POSITION WITH REFERENCE POINT				
DESCRIPTION	X	Y	Z	
090	ELECTRICITY	78 3/8 [1990]	25 7/8 [657]	49 3/8 [1254]

		STERIS Canada Corporation	TITLE	VISION® 1327 CART AND UTENSILS WASHER/DISINFECTOR
<small>This document contains confidential and proprietary information of STERIS Corporation. Neither this document nor the information herein are to be reproduced, distributed, used or disclosed, either in part or in whole, except as specifically authorized by STERIS Corporation.</small>				
DWG. NO.	MG	CD	FL	DWG. NO.
DATE	2007-12-01	DATE	2011/02/10	DATE
				DWG. NO. 920-513-916
				11 SHEET OF 13

ACCORDING

UTILITY (ELECTRICITY) FOR FLOOR-MOUNTED UNIT



UTILITY REQUIREMENTS CHART			
DESCRIPTION	CONNECTION	CONNECTION	
		TYPE	SIZE
090 ELECTRICITY (A)	CONDUIT	1 - 1 1/4	[35-44]

STANDARD CONFIGURED				
3~ OPERATING VOLTAGE (B)	200 / 208V 50Hz	200 / 208V 60Hz	380 / 400 / 415V 50Hz	460 / 480V 60Hz
NOMINAL AMPERAGE	27.5A	25.5A	14.5A	13.5A
RECOMMENDED PROTECTION	40A	40A	20A	20A

GENERAL NOTES:

- STERIS RECOMMENDS A LIGHT IN SERVICE AREA (IF APPLICABLE) ALONG WITH PROVISION OF A CONVENIENCE OUTLET FOR MAINTENANCE.
- BREAKERS AND FUSED DISCONNECT AS REQUIRED, ARE BY OTHERS.
- ALL CONNECTIONS SHOULD BE IN ACCORDANCE WITH LOCAL CODES.
- SEE PAGE 1 FOR POSITION OF REFERENCE POINT DETAILS.

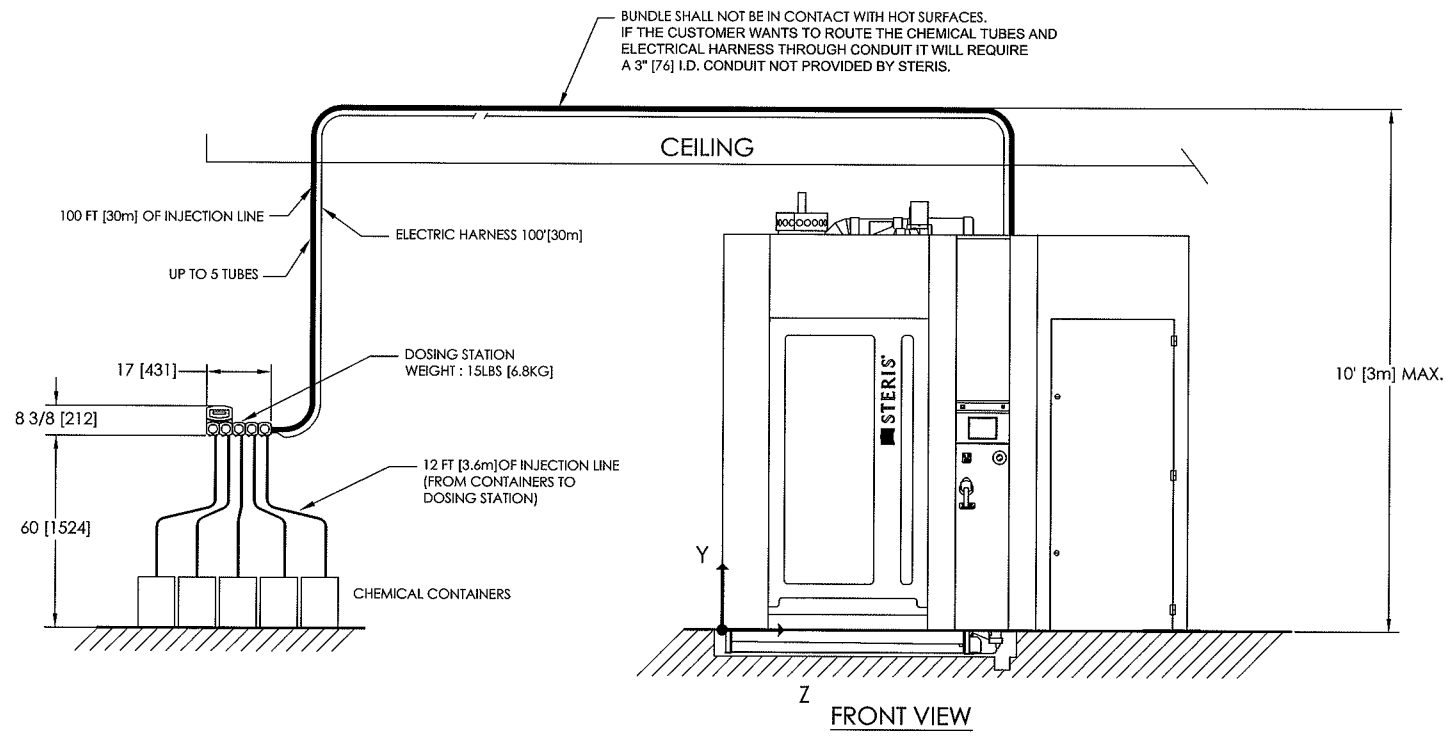
NOTE (A) : SEE OPERATING VOLTAGE BOARD.
 NOTE (B) : NEUTRAL WIRE NOT REQUIRED.
 NOTE (C) : AUXILIARY DRY CONTACTS FOR CUSTOMER UTILITY CONTROL AVAILABLE INSIDE CONTROL BOX. SEE ELECTRICAL SCHEMATIC.

RELAY	FUNCTION
CR5	CYCLE IN OPERATION
CR6	LOW VENTILATION REQUEST
CR7	HIGH VENTILATION REQUEST
CR8	ALARM
CR9	CYCLE COMPLETE
CR10	HOT WATER REQUEST
CR11	PURE WATER REQUEST
CR12	COLD WATER REQUEST


CONNECTION POSITION WITH REFERENCE POINT			
DESCRIPTION	X	Y	Z
090 ELECTRICITY	78 3/8 [1990]	25 7/8 [657]	56.375 [1431]

		STERIS Canada Corporation <small>This document contains confidential and proprietary information of STERIS Corporation. Neither this document nor the information herein are to be reproduced, distributed, used or employed, either in part or in whole, except as specifically authorized by STERIS Corporation.</small>	TITLE VISION® 1327 CART AND UTENSILS WASHER/DISINFECTOR
DWR. MKG DATE 2009-12-01	CDR. <i>MG</i> DATE 2011/05/02	DNG. <i>FL</i> DATE 2011/05/03	DWG. NO. 920-513-916
			12 SHEET OF 13

DOSING STATION



GENERAL NOTE:
 1. AMBIANT TEMPERATURE SHALL NOT EXCEED 40°C [104°F].

STERIS 		STERIS Canada Corporation <small>This document contains confidential and proprietary information of STERIS Corporation. Neither this document nor the information herein are to be reproduced, distributed, used or disclosed, either in part or in whole, except as specifically authorized by STERIS Corporation.</small>	TITLE VISION® 1327 CART AND UTENSILS WASHER/DISINFECTOR
DWG. NO. 920-513-916	DATE 2009-12-01	DATE 2011/05/02	13 SHEET OF 13

A000000