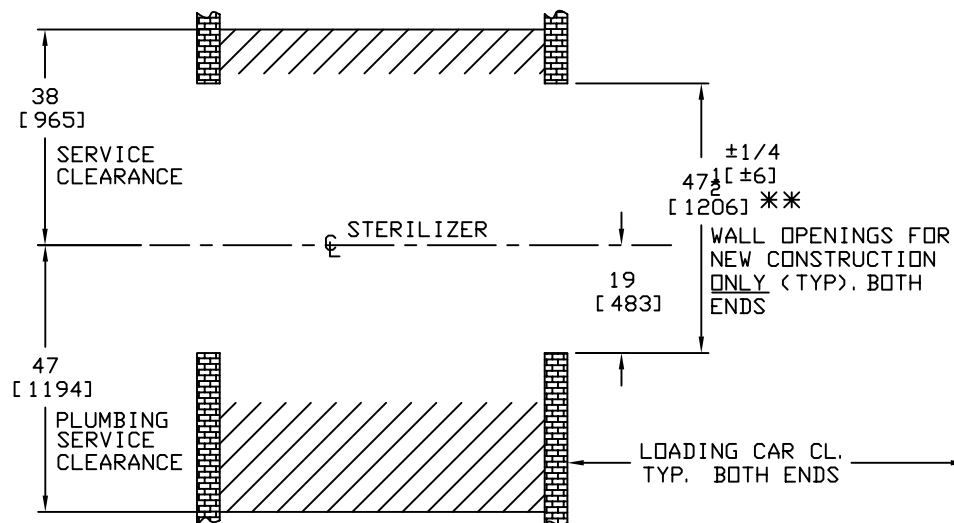


## PLAN VIEW



SIZE	'S' $\pm 1/4$ $\left( \begin{smallmatrix} +6 \\ -0 \end{smallmatrix} \right)$	LOADING CAR CL.
26 X 37.5 X 54 (660 X 953 X 1372)	60 (1524)	112 (2845)
26 X 37.5 X 66 (660 X 953 X 1676)	72 (1829)	123 (3124)

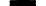
**\*\* 38" (965) WALL OPENING IS REQUIRED FOR EXISTING OPERATING END WALL INSTALLATION ONLY**  
(SEE SHEET 2 FOR EXISTING NON-OPERATING END WALL OPENING INSTALLATION REQUIREMENTS)

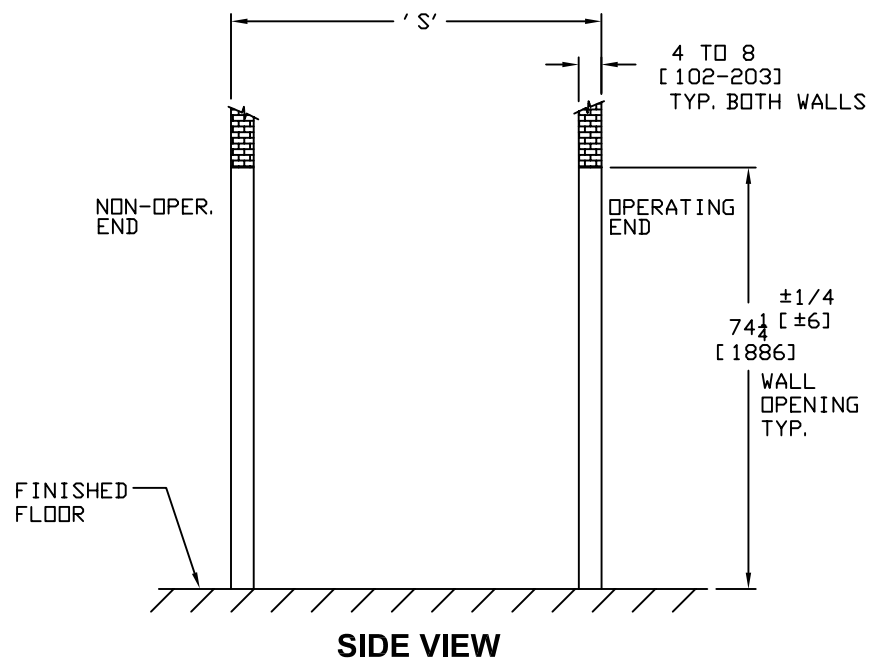


## NOTES:

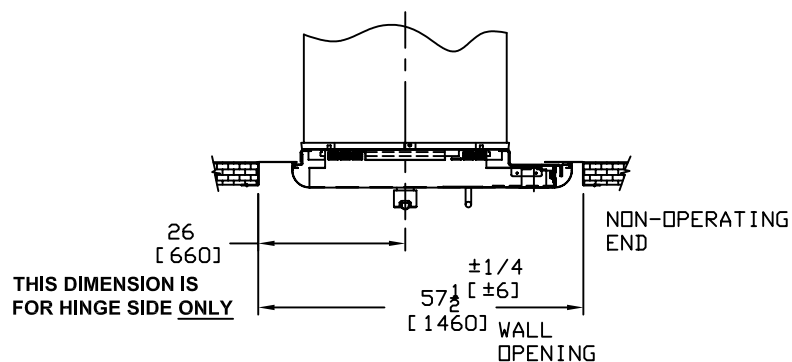
1. WALL THICKNESS: 4" TO 8" (102-203).
2. ALL DIMENSIONS IN INCHES AND (MM).
3. THESE SERVICE CLEARANCES MUST BE MAINTAINED TO ALLOW ACCESS TO STERILIZER FOR SERVICEABILITY.
4. THE SHADED PLUMBING SERVICE CLEARANCE FLOOR SURFACE MUST BE SMOOTH WITH NO OBSTRUCTIONS (SUCH AS PIPING, WIRING, FLOOR SINKS, ETC.). THIS OBSTRUCTION FREE CLEARANCE MUST EXTEND TO A HEIGHT OF AT LEAST 77" (1965) IN ORDER TO PROPERLY SERVICE THE PIPING SKID. THE 47" PLUMBING SERVICE CLEARANCE SHOULD INCREASE TO 51" (1295) IF SPACE IS AVAILABLE.

## WALL OPENINGS AND SERVICE CLEARANCE SHT. 1 OF 7

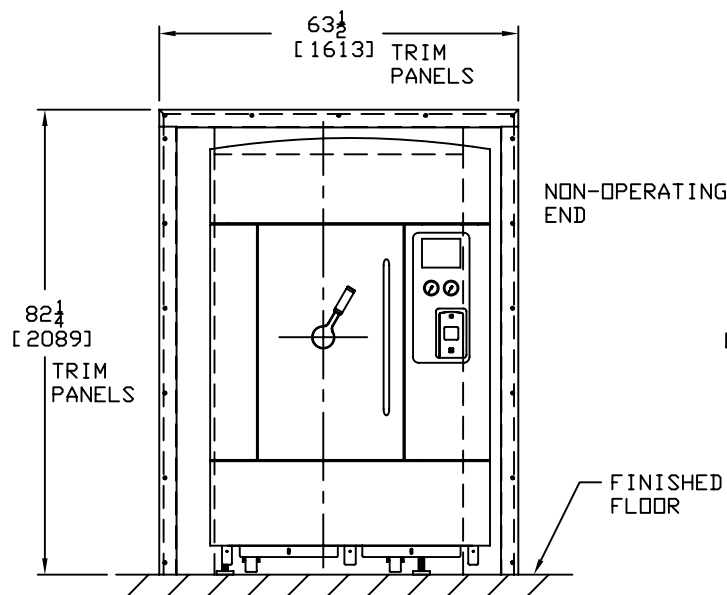
ALL DIMENSIONS ARE IN INCHES (MILLIMETERS) ALSO REFER TO GENERAL NOTES APPLICABLE TO EQUIPMENT DRAWINGS DWG. NO. 62941-091		26 x 37.5 x 54 and 66 EVOLUTION STEAM STERILIZER DOUBLE (HINGE) DOORS RECESSED TWO WALLS STEAM HEAT	EQUIPMENT DRAWING NO. 129390-206
<b>STERIS</b> 	STERIS Corporation Mentor, OH		ITEM _____ LOCATION(S) _____ _____



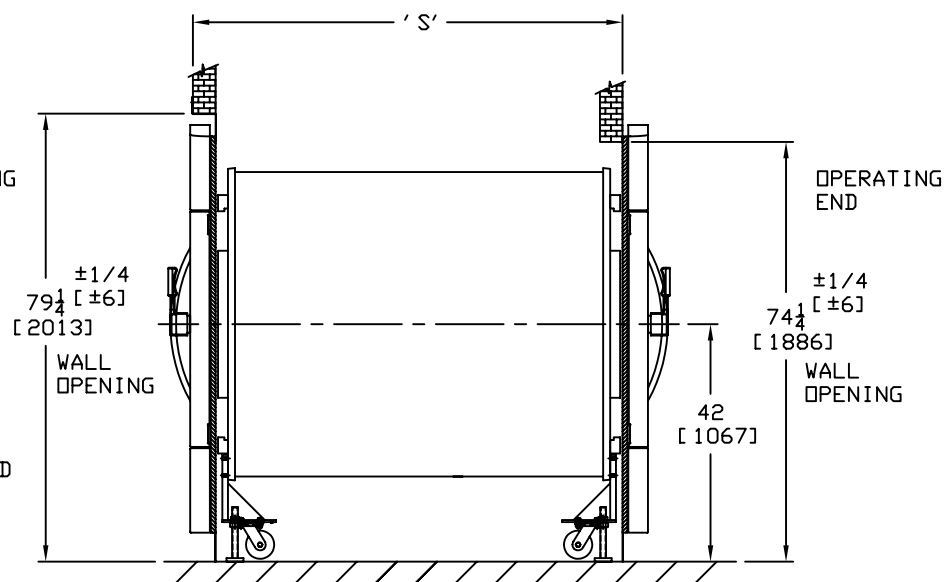
## SIDE VIEW

**PLAN VIEW****FOR EXISTING WALL LOCATION**

SIZE	'S' $\pm 1/4$ ( $\pm 6$ )
26 X 37.5 X 54 (660 X 953 X 1372)	61 3/4 (1568)
26 X 37.5 X 66 (660 X 953 X 1676)	76 (1930)

**FRONT VIEW**

LEFT HAND HINGE (AS SHOWN)

**SIDE VIEW**

**MODIFICATION TO EXISTING NON-OPERATING END  
WALL OPENING FOR D.D. RECESSED TWO WALL  
STERILIZER**

ALL DIMENSIONS ARE IN INCHES  
(MILLIMETERS)ALSO REFER TO GENERAL NOTES  
APPLICABLE TO EQUIPMENT DRAWINGS

DWG. NO. 62941-091

**STERIS**STERIS Corporation  
Mentor, OH

26 x 37.5 x 54 and 66 EVOLUTION  
STEAM STERILIZER  
DOUBLE (HINGE) DOORS  
RECESSED TWO WALLS  
STEAM HEAT

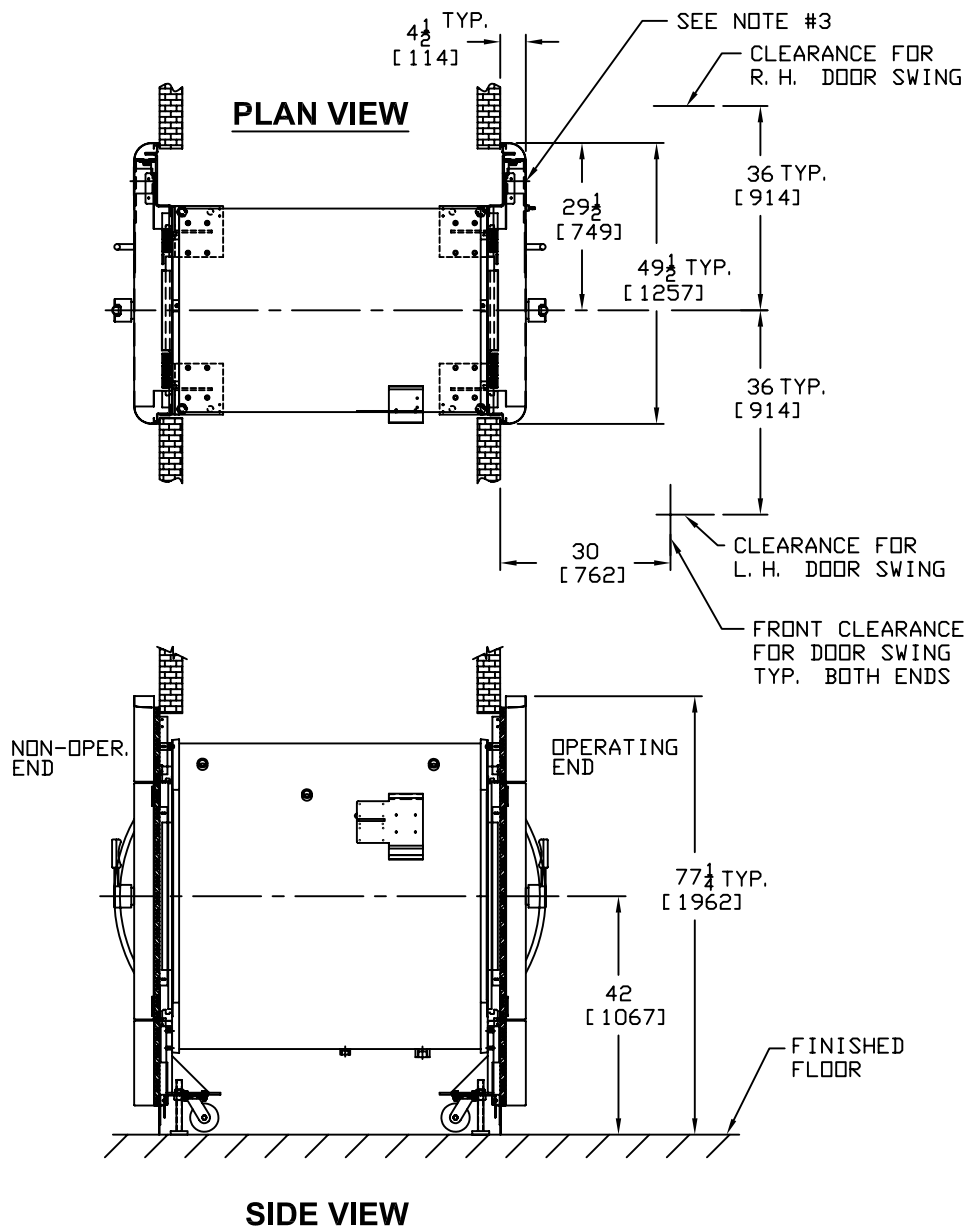
SHT. 2 OF 7

EQUIPMENT DRAWING NO.  
129390-206

ITEM

LOCATION(S)

AUTOCAD: DWG.




### GENERAL NOTES:

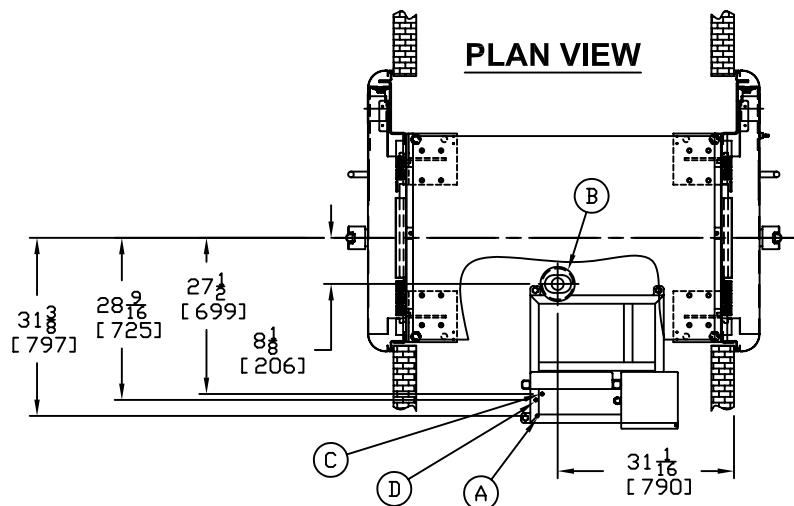
- ALL DIMENSIONS IN INCHES AND (MM).
- UNIT WIDTH IS 38" (965). DOOR OPENINGS IN FACILITY MUST BE 40" (1016) WIDE OR LARGER TO ACCOMMODATE STERILIZER.
- DISPLAY THIS SIDE FOR LH DOOR SWING AND OPPOSITE SIDE FOR RH DOOR SWING.
- CURB WEIGHTS:  
 26 x 37.5 x 54 DD VESSEL = 3600 LBS. (1633 KG.)  
 26 x 37.5 x 66 DD VESSEL = 3940 LBS. (1787 KG.)  
 PIPING STAND = 525 LBS. (238 KG.)
- MAXIMUM OPERATING WEIGHT BASED ON CHAMBER FULLY LOADED WITH WATER FLASKS:  
 26 X 37.5 X 54 - 4200 LBS (1901 KG)  
 26 X 37.5 X 66 - 4700 LBS (2127 KG)
- FACILITY MUST PROVIDE REGULATED STEAM PRESSURE IN THE DYNAMIC RANGE SPECIFIED. FAILURE TO DO SO WILL RESULT IN IMPROPER EQUIPMENT OPERATION.
- HEAT LOSS AT 70°F (21°C):  
 26 x 37.5 x 54 - TO ROOM: 14650 BTU/HR (15,457 KILOJOULE)  
 26 x 37.5 x 66 - TO ROOM: 16800 BTU/HR (17,725 KILOJOULE)
- LEVELING FEET ARE PROVIDED FOR PROPER INSTALLATION.
- STERIS ASSUMES NO RESPONSIBILITY FOR CHANGES MADE NECESSARY THROUGH FAILURE TO OBSERVE THE SPECIFICATIONS ON EQUIPMENT DRAWING AND NOTE PAGES. SPECIFICATIONS AND DESCRIPTIONS ARE SUBJECT TO CHANGE WITHOUT NOTICE.

### STERILIZER INSTALLATION

SHT. 3 OF 7

ALL DIMENSIONS ARE IN INCHES (MILLIMETERS) ALSO REFER TO GENERAL NOTES APPLICABLE TO EQUIPMENT DRAWINGS DWG. NO. 62941-091		26 x 37.5 x 54 and 66 EVOLUTION STEAM STERILIZER DOUBLE (HINGE) DOORS RECESSED TWO WALLS STEAM HEAT	EQUIPMENT DRAWING NO. 129390-206
	STERIS Corporation Mentor, OH		ITEM _____ LOCATION(S) _____ _____

## PLAN VIEW

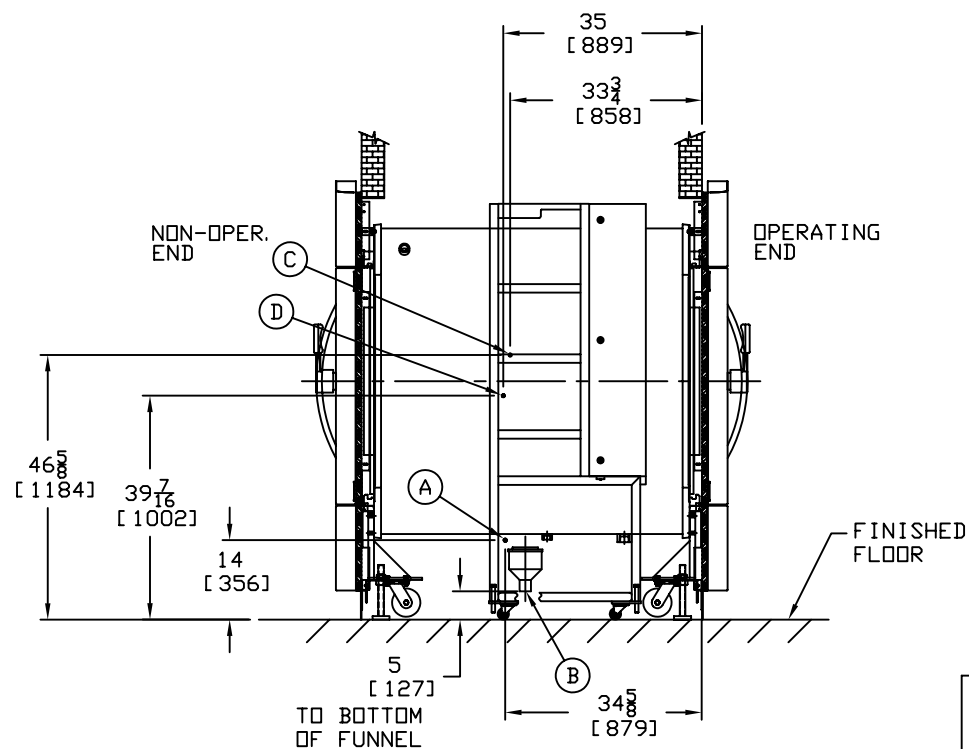


## PLUMBING CONNECTIONS-DOMESTIC

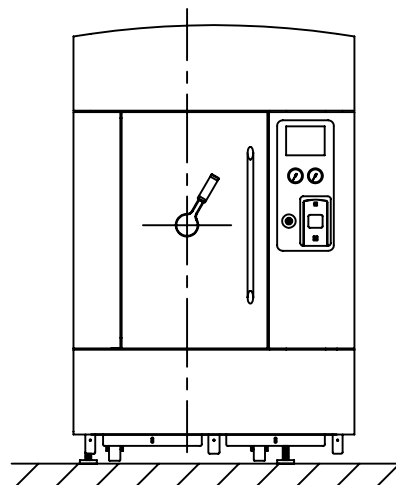
- (A) STERILIZER COLD WATER
- (B) STERILIZER DRAIN
- (C) STERILIZER COMPRESSED AIR
- (D) STERILIZER STEAM

**NOTE:** SEE SHEET 5 FOR PLUMBING INSTALLATION SPECS. AND PLUMBING REQUIREMENTS.

## SIDE VIEW



## FRONT VIEW



SHT. 4 OF 7

<p>ALL DIMENSIONS ARE IN INCHES (MILLIMETERS) ALSO REFER TO GENERAL NOTES APPLICABLE TO EQUIPMENT DRAWINGS DWG. NO. 62941-091</p>	<p>26 x 37.5 x 54 and 66 EVOLUTION STEAM STERILIZER DOUBLE (HINGE) DOORS RECESSED TWO WALLS STEAM HEAT</p>	<p>EQUIPMENT DRAWING NO. 129390-206</p> <p>ITEM _____</p> <p>LOCATION(S) _____</p>
---	--	--



STERIS Corporation  
Mentor, OH

**INSTALLATION SPECIFICATIONS:**

THE INSTALLATION OF THE EVOLUTION STERILIZER MUST MEET ALL APPLICABLE REGULATIONS.

INSTALLATION SPECIFICATION IS LISTED AS ENGINEERING AND INSTALLATION GUIDES. REFERENCED COMPONENTS AND SERVICE CONNECTIONS ARE NOT FURNISHED AS PART OF EQUIPMENT UNLESS UNDER WRITTEN AGREEMENT WITH STERIS.

- PIPE SIZES LISTED UNDER **PLUMBING REQUIREMENTS** INDICATE THE EQUIPMENT TERMINATION SIZES ONLY. SIZE PIPING TO EQUIPMENT DEPENDING ON LENGTH OF PIPE RUN FROM PRESSURE REGULATING STATION FOR STEAM LINE, AIR AND MAIN WATER HEADERS. TO SUPPLY THE SPECIFIED SERVICE PRESSURE AND FLOW RATE AT EQUIPMENT TERMINALS, INCLUDE EFFECT OF COINCIDENT DRAW OF MULTIPLE UNIT INSTALLATIONS.
- PROVIDE PIPING, SHUT-OFF VALVE, PIPE PLUGGED TEE, AND UNION IN STEAM, AIR AND WATER SUPPLY CONNECTION BETWEEN EQUIPMENT AND STUB OUTS. PLUGGED TEE CAN LATER BE USED FOR TEST PRESSURE GAUGE CONNECTION. ARRANGE CONNECTION PIPING TO ALLOW ACCESS TO MACHINE COMPONENTS AND ELECTRICAL CONTROL PANEL.
- RECOMMEND PROVISION OF BLOW DOWN VALVE AT EACH STEAM, AIR AND WATER STRAINER TO ENABLE STRAINER CLEAN OUT.
- FOR RECOMMENDED FEED WATER QUALITY FOR STERILIZERS SEE STERIS DWG. NO. 62941-091
- BLOW DOWN BUILDING STEAM, AIR AND WATER SUPPLY LINES BEFORE FINAL CONNECTION TO EQUIPMENT.
- THE STERILIZER IS NOT SUPPLIED WITH A VACUUM BREAKER OR BACKFLOW PREVENTER AND WHERE REQUIRED BY LOCAL CODES, INSTALLATION OF SUCH A DEVICE IN WATER LINE IS BY OTHERS.
- CLEAN STEAM NOTE:** STEAM SUPPLIED TO STERILIZER MUST BE MADE FROM WATER FREE OF SULFITES, HYDRAZINE, ANTI-SCALING COMPOUNDS AND CORROSION CONTROL CHEMICALS.
- FOR GENERAL INSTALLATION INFORMATION SEE STERIS DRAWING NO. 62941-091. (THIS DWG. SHOULD ALWAYS ACCOMPANY THE EQUIPMENT DWGS.) IF DWG. IS NOT ATTACHED, CONTACT STERIS SERVICE ENGINEERING AT 1-800-333-8848 TO OBTAIN A COPY.
- OPTIONAL AIR COMPRESSOR:** MEASURES 14"L x 14"W x 12"H AND OPERATES AT 120VAC, 60Hz, 6.9 AMPS. FOR USE ON ALL DOMESTIC EVOLUTION (HEALTHCARE) AND EVOLUTION-L (LAB-SCI) STERILIZERS EXCEPT FOR LAB-SCI DOUBLE DOOR UNITS.
- PLACEMENT OF PIPING SHUTOFFS:** WHEN INSTALLING, SHUTOFFS MUST BE LOCATED IN A SUITABLE LOCATION WITHIN LINE OF SIGHT AND CLEAR OF ANY OBSTRUCTIONS THAT WOULD PUT THE SERVICE PERSON IN HARMS WAY IN ORDER TO SHUT IT OFF.

**PLUMBING REQUIREMENTS-DOMESTIC**

- (A) STERILIZER COLD WATER: (SEE NOTE #4)  
SUPPLY TEMPERATURE REQUIREMENT IS 59°F (15°C) MAX., VACUUM EFFICIENCY IS REDUCED AT WATER TEMPERATURES ABOVE 70°F (21°C).  
3/4" NPT  
20-50 PSIG DYNAMIC (1.38-3.45 bar)  
CONSUMPTION IN CYCLE:  
PEAK- 13 gpm (49 lpm)  
AVERAGE-26 X 37.5 X 54 207 gal/cycle (784 l/cycle)  
26 X 37.5 X 66 250 gal/cycle (946 l/cycle)  
CONSUMPTION OUT OF CYCLE:  
AVERAGE-26 X 37.5 X 54 12 gal/hr (.8 lpm)  
26 X 37.5 X 66 15 gal/hr (.9 lpm)
- (B) STERILIZER DRAIN:  
2" ODT  
(FLOOR DRAIN CAPACITY MUST HANDLE PEAK WATER CONSUMPTION).
- (C) STERILIZER COMPRESSED AIR: (SEE NOTE #9)  
1/4" NPT  
80-120 PSIG DYNAMIC (5.5-8.3 bar)  
OIL FREE, DRY (DEHUMIDIFIED)  
3 CFM (5.1 CMH)
- (D) STERILIZER STEAM:  
3/4" NPT  
97 TO 100% VAPOR QUALITY  
DYNAMIC PRESSURE 50-80 PSIG (3.4-5.5 bar)  
CONSUMPTION IN CYCLE:  
PEAK- 310 PPH (141 kg/hr)  
AVERAGE-26 X 37.5 X 54 82 lb/cycle (37 kg/cycle)  
26 X 37.5 X 66 100 lb/cycle (45 kg/cycle)  
CONSUMPTION OUT OF CYCLE:  
AVERAGE-26 X 37.5 X 54 28 lb/hr (12.7 kg/hr)  
26 X 37.5 X 66 34 lb/hr (15.4 kg/hr)

**CHECK ALL NATIONAL CODES AND STANDARDS SHT. 5 OF 7**

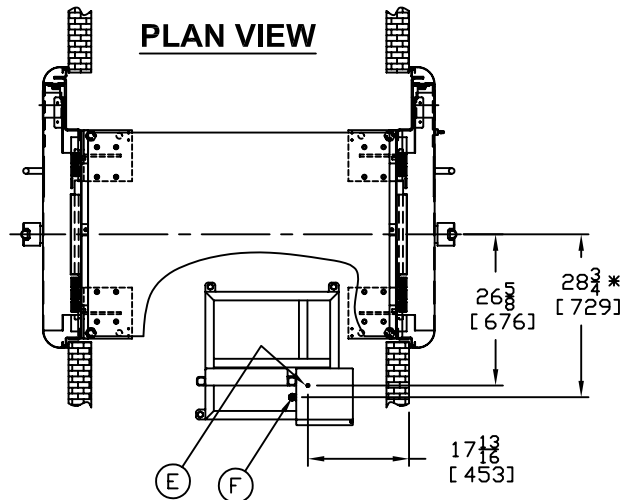
ALL DIMENSIONS ARE IN INCHES (MILLIMETERS) ALSO REFER TO GENERAL NOTES APPLICABLE TO EQUIPMENT DRAWINGS DWG. NO. 62941-091 <b>STERIS</b> STERIS Corporation Mentor, OH	26 x 37.5 x 54 and 66 EVOLUTION STEAM STERILIZER DOUBLE (HINGE) DOORS RECESSED TWO WALLS STEAM HEAT	EQUIPMENT DRAWING NO. 129390-206 ITEM _____ LOCATION(S) _____
---	---	--

## ELECTRICAL CONNECTIONS-DOMESTIC

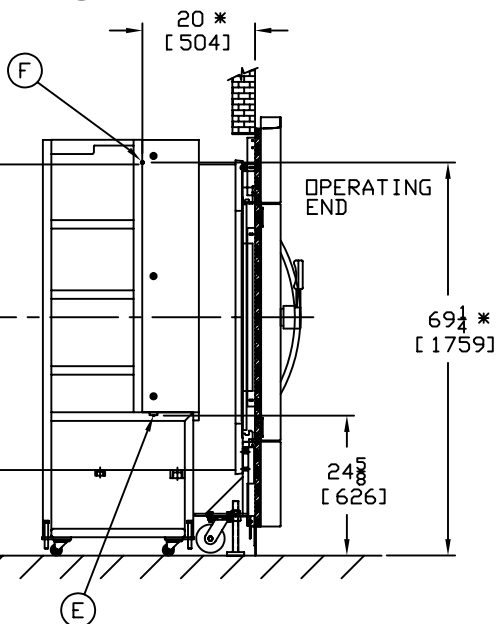
- (E) STERILIZER ETHERNET
- (F) STERILIZER POWER

**NOTE:** SEE SHEET 7 FOR ELECTRICAL INSTALLATION SPECS. AND ELECTRICAL REQUIREMENTS.

**PLAN VIEW**

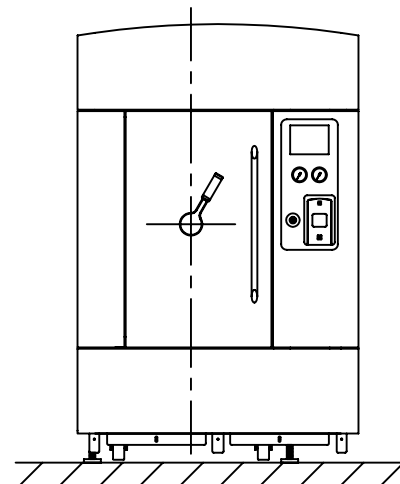


\* = TO CONTROL BOX HOLE (F)



**SIDE VIEW**

**FRONT VIEW**



SHT. 6 OF 7

ALL DIMENSIONS ARE IN INCHES  
(MILLIMETERS)  
ALSO REFER TO GENERAL NOTES  
APPLICABLE TO EQUIPMENT DRAWINGS  
DWG. NO. 62941-091



STERIS Corporation  
Mentor, OH

26 x 37.5 x 54 and 66 EVOLUTION  
STEAM STERILIZER  
DOUBLE (HINGE) DOORS  
RECESSED TWO WALLS  
STEAM HEAT

EQUIPMENT DRAWING NO.  
129390-206

ITEM \_\_\_\_\_  
LOCATION(S) \_\_\_\_\_  
\_\_\_\_\_

**INSTALLATION SPECIFICATIONS:**

THE INSTALLATION OF THE EVOLUTION STERILIZER MUST MEET ALL APPLICABLE REGULATIONS.

INSTALLATION SPECIFICATION IS LISTED AS ENGINEERING AND INSTALLATION GUIDES. REFERENCED COMPONENTS AND SERVICE CONNECTIONS ARE NOT FURNISHED AS PART OF EQUIPMENT UNLESS UNDER WRITTEN AGREEMENT WITH STERIS.

1. PROVIDE GROUPED OR GANGED CIRCUIT PROTECTION AND DISCONNECT FOR STERILIZER POWER (F) AS REQUIRED BY CODES AND STANDARDS. INDIVIDUAL POWER SHUTOFFS REQUIRED NEAR EACH MACHINE FOR SERVICING.
2. PROVIDE GROUNDED METAL CONDUIT AND WIRING BETWEEN EQUIPMENT TERMINALS AND STUB OUTS OR DISCONNECTS. CHECK LOCAL CODES FOR MINIMUM WIRE SIZES. SEE (F) FOR MINIMUM RECOMMENDED WIRE SIZES FOR STERILIZER CONNECTIONS.
3. FOR GENERAL INSTALLATION INFORMATION SEE STERIS DRAWING NO. 62941-091. (THIS DWG. SHOULD ALWAYS ACCOMPANY THE EQUIPMENT DWGS.) IF DWG. IS NOT ATTACHED, CONTACT STERIS SERVICE ENGINEERING AT 1-800-333-8848 TO OBTAIN A COPY.
4. **PLACEMENT OF ELECT. DISCONNECTS:** WHEN INSTALLING, DISCONNECTS MUST BE LOCATED IN A SUITABLE LOCATION WITHIN LINE OF SIGHT AND CLEAR OF ANY OBSTRUCTIONS THAT WOULD PUT THE SERVICE PERSON IN **HARMS WAY** IN ORDER TO SHUT IT OFF. ALSO, THE LOCATION OF THE DISCONNECTS SHOULD ALLOW THE SERVICE PERSON TO SHUTOFF POWER FROM THE SIDE TO PREVENT POSSIBLE ARC FLASH.

**ELECTRICAL REQUIREMENTS-DOMESTIC**


(E) STERILIZER ETHERNET:  
10/100 BASE T SUPPORTING TCP/IP PROTOCOL RJ45F CONNECTION

(F) STERILIZER POWER:  
DOMESTIC:  
208/240V, 50/60HZ, 12A, (3) PHASE. MINIMUM 16A CIRCUIT BREAKER RECOMMENDED. MINIMUM RECOMMENDED LINE & GROUND CONDUCTOR SIZE AWG #12 COPPER (2.05 MM)  
OR 480V, 50/60HZ, 6A, (3) PHASE. MINIMUM 8A CIRCUIT BREAKER RECOMMENDED. MINIMUM RECOMMENDED LINE & GROUND CONDUCTOR SIZE AWG #14 COPPER (1.63 MM)

208VAC AND 240VAC REQUIRE A FOUR (4) WIRE "Y" CONNECTION  
(L1, L2, L3, GND.)

480VAC REQUIRE A FIVE (5) WIRE "Y" CONNECTION  
(L1, L2, L3, NEUT, GND.)

**CHECK ALL NATIONAL CODES AND STANDARDS** SHT. 7 OF 7

ALL DIMENSIONS ARE IN INCHES (MILLIMETERS) ALSO REFER TO GENERAL NOTES APPLICABLE TO EQUIPMENT DRAWINGS DWG. NO. 62941-091	26 x 37.5 x 54 and 66 EVOLUTION STEAM STERILIZER DOUBLE (HINGE) DOORS RECESSED TWO WALLS STEAM HEAT	EQUIPMENT DRAWING NO. 129390-206
		ITEM _____ LOCATION(S) _____